

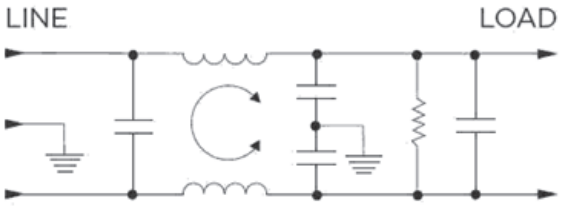
Features

- High CM & DM attenuation
- Rated up to 6A
- Choice of termination including IEC styles
- Medical Versions (No Cy)

Applications

- Electrical and Electronic equipment
- Consumer goods
- Home appliances
- Medical equipment

Typical Circuit Diagram



Technical Specifications

Maximum Continuous Operating Voltage	250 VAC Max
Operating Frequency	50/60Hz
Rated Current	3 to 6A @40°C
Temperature range	-10°C to +40°C
High Potential Test Voltage	Line to Ground: 2250 VDC Line to Line: 1450 VDC

Approvals & Compliances



Product Selector

AMI-M11S - 1 - 6 - C

1	Spade (Faston 6.3 x 0.8mm)
3	Wire Leads
7	IEC Socket Spade/ Terminal
Rated Current @ 40°C	
A	Medical Version (No Earth Leakage)
B	Standard Version

Selection Table

AMI Designation	Input/output Style			Current Rating	Inductance	Capacitance		Resistor	Leakage Current @ 120 VAC 60Hz/250 VAC 50 Hz	TIL Insertion Loss	Case Style
						Cx	Cy				
Available Part Numbers	6.3mm Spade Terminals	Wire Leads	IEC Socket Spade/ Terminal		mH	nF	pF	KO	mA		
						AMI-M11S-1-3-A	1				
AMI-M11S-3-3-A	-	3	-	3	36.8	940	-	330	0	001	B
AMI-M11S-1-3-C	1	-	-	3	36.8	940	4000	330	0.30/0.50	003	A
AMI-M11S-3-3-C	-	3	-	3	36.8	940	4000	330	0.30/0.50	003	B
AMI-M11S-1-6-A	1	-	-	6	18.5	940	-	330	0	002	A
AMI-M11S-3-6-A	-	3	-	6	18.5	940	-	330	0	002	B
AMI-M11S-1-6-C	1	-	-	6	18.5	940	4000	330	0.30/0.50	004	A
AMI-M11S-3-6-C	-	3	-	6	18.5	940	4000	330	0.30/0.50	004	B
AMI-M11S-7-3-C	-	-	7	3	36.8	940	4000	330	0.30/0.50	003	C
AMI-M11S-7-3-A	-	-	7	3	36.8	940	0	330	0.002/0.005	001	C
AMI-M11S-7-6-C	-	-	7	6	18.5	1089	4000	330	0.30/0.50	004	C
AMI-M11S-7-6-A	-	-	7	6	18.5	1089	0	330	0.002/0.005	002	C

Case Styles

STYLE A

Typical Dimensions:

Line/Load Terminals (4):	.250 [6.3] with .07 [1.8] Dia. hole
Ground Terminal (1):	.250 [6.3] with .07 x .16 [1.8 x 3.8] slot
Mounting Holes (2):	.188 [4.78] Dia.

STYLE B

Typical Dimensions:

Wire Leads (5):	4.0 [101.6] Min., AWG18
Mounting Holes (2):	.188 [4.78] Dia.

STYLE C

Typical Dimensions:

Load Terminals (2):	.250 [6.3] with .07 [1.8] Dia. hole
Ground Terminal (1):	.250 [6.3] with .07 x .16 [1.8 x 3.8] slot
Line Inlet (1):	IEC 60320-1 C14
Tapped Inserts (2):	6-32 x 1/4

Panel Cutout for IEC models

Tolerance $\pm .005$ [0.13]

Mechanical Dimensions:

Model Number	A max	B max	C max	D $\pm .15$ $\pm .38$	E max
AMI-M11S-1-3-C AMI-M11S-1-6-C	3.56"/90.4mm	2.15"/54.6mm	1.81"/46.0mm	2.938"/74.63mm	3.38"/85.9mm
AMI-M11S-3-3-C AMI-M11S-3-6-C	2.55"/64.8mm	2.15"/54.6mm	1.81"/46.0mm	2.938"/74.63mm	3.38"/85.9mm
AMI-M11S-7-3-C	3.52"/89.4mm	2.25"/57.2mm	1.78"/45.2mm	1.575"/40.01mm	*0.63"/16.0

Typical Insertion Loss

According to CISPR17 in 50 Ω system

— Common Mode / Asymmetrical (L-G)
 — Differential Mode / Symmetrical (L-L)

