



**WE DESIGN.  
WE BUILD.  
WE DELIVER.**

## About Us

Altran Magnetics is a leading manufacturer of electronic, electrical, and mechanical components, with a mission to provide the highest-quality products and exceptional customer service. We Design, We Build, We Deliver. Altran Magnetics is committed to creating innovative solutions that meet the needs of customers in a range of industries.

## Altran is a leader in:

Altran is a leader in providing high-quality solutions, specializing in High Voltage **DC Contactors, Motors and Blowers, EMI Filters, Solid State Relays, and Photo Controls.**

## Industries We Serve

- ✓ HVACR
- ✓ Electric Vehicle
- ✓ Energy Storage
- ✓ Fireplace Applications
- ✓ Industrial Applications
- ✓ DC Charging



### Unrivaled Lead Times

Delivering unparalleled solutions with unmatched speed for your success.



### Global Support Network

Connecting communities worldwide, one support at a time.



### Rapid Custom Solutions

Innovate swiftly with our tailored solutions.



### Competitive Prices

Unbeatable prices for exceptional quality and value.



### Reliability Assured

Ensuring trust through consistent and dependable service.



### Efficiency Across Scale

Optimizing operations seamlessly for scalable and sustainable growth.

Call us for  
more info



**815-632-3150**



## DC Contactors



### Epoxy Resin Series

- 12V up to 1500V
- Up to 600A
- Cost-effective designs



### Ceramic Series

- 12V up to 1800V
- Up to 1000A
- High performance designs



### PCB Series

- 12V up to 900V
- Up to 500A
- Board mount designs



### Energy Storage Series

- 12V up to 1500V
- Up to 600A
- Perfect for ESS and charging

## EMI Filters



### IEC Inlet / Power Entry Module Filters

- 250VAC 50-60Hz
- 1A – 20A current ratings
- Various Mounting Styles
- Multiple Terminal Choices
- Custom Versions available



### Single-Phase Filters

- 250VAC 50-60Hz
- 1A – 100A current ratings
- Chassis Mount
- Multiple Terminal Choices
- Choice of performance



### Three Phase Filters

- Up to 520VAC 50-60Hz
- 6A – 1000A current ratings
- Chassis Mount
- Multiple Terminal Choices
- 3 or 4 Line options with Neutral



### DC Filters

- Up to 1500 V DC
- 25A – 1000A current ratings
- Ideal for Renewable Energy applications
- Designed for EV chargers
- Custom version available

## Solid State Relays

A selection of SSRs suitable for use in a wide range of applications, AC-AC, DC-DC, DC-AC, DIN-Rail, PCB, and panel mounting options available.

- Applications: Switching applications which include heating control, motor control, valve actuation and applications that require fast non-arcing switching.
- Markets: Food industry equipment, Industrial Automation, Medical and healthcare, energy and utilities, HVAC.
- Accessories: Heatsink, covers, extra protection options (Contact Altran Magnetics for inquiries).



### AC/DC Output Models - Single Phase - DIN-rail mounted



### AC/DC Output Models - Single Phase - PCB Mounted



### AC/DC Output Models - Single Phase - Panel Mounted



### AC Output Models - Three Phase - Panel Mounted



## Motors and Blowers



### C-Frame Motors

Our C-frame AC motors are compact, fractional horsepower motors designed to drive fans and blowers found in various equipment.

**Applications:** Ventilation fans, electric heaters, humidifiers, range hoods, fireplace-blowers and refrigeration units

Lamination Width: 1.89", 2.38", 2.50". Lamination Stack Thickness: .375"-2.0"



### 3.3" Shaded Pole or PSC Motors

Motors available for high torque applications and pump motors. Sealed ball or sleeve bearing styles available for long life.

Multi-tap motors available for multi-speed, multi-power, and reversible motors.

**Applications:** Fans, blowers, pumps, air conditioners, and heaters.



### Unit Bearing Motors

AC and EC Unit bearing motors available. Sealed unit bearing design ensures constant lubrication and virtually eliminates metal on metal contact.

Motors available in cast iron or cast aluminum shells.

**Applications:** Domestic refrigerator and freezer fans, commercial refrigeration equipment, walk in coolers, food and beverage display cases and many others.



### EC Motors

High efficiency motors, with easy integration and a wide range of mounting configurations.

Come with advanced EC design which ensures quiet, efficient operation.

**Applications:** Refrigeration and HVAC Systems, Commercial and Industrial Ventilation, Data Center Cooling, Pool and Spa Pumps



### 42/48/56 Motors

Designed and constructed for long life, with Steel and Aluminum shells in TEFC, TE, ODP, or AO configurations.

**Applications:** Axial Fans, Condenser Fans, Unit Heaters, Home Ventilation, Jet Pumps, Commercial Kitchen Equipment Pumps



### Backward Curved Blowers

Supply air flow at medium system pressures; air is drawn in over the motor and discharged radially.

**Applications:** Cleanrooms, exhaust systems, routers, telecom equipment

Size: Ø5.2 in. to 24.8 in. (133 mm to 630 mm) CFM: 150 to 13,000



### Axial/Compact Fans

Supply air flow at low system pressures. Complete fan packages provide easy mounting, minimal depth, low noise and high efficiency.

**Applications:** Condensers, horticulture, industrial and commercial air conditioners, livestock ventilation, Medical equipment, power supplies, printers/copiers, routers, servers

Size: Ø0.8 in. to 33.4 in. (20 mm to 850 mm) CFM: 0.8 to 7,800



### Centrifugal blowers

Suitable for applications with relatively high pressures. External rotor motor combined with a forward curved centrifugal wheel with a scroll housing.

**Applications:** Exhaust systems, range hoods, machine cooling

Size: Ø4.7 in. to 11 in. (120 mm to 277 mm) CFM: 24 to 700

## Motors and Blowers

### Squirrel Cage Blowers

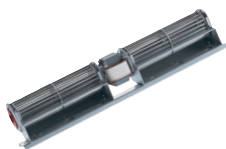


Squirrel Cage Blower Fans, with their versatile design and efficient airflow characteristics, find extensive applications across various industries. Typically used where a constant flow of 100-160CFM is needed for Low to medium airflow applications in residential and light commercial applications.

**Applications:** ventilation, combustion, cooling and heating and drying

**Size:** 1.9 in. to 17.7 in. (50 mm to 450 mm)

### Tangential (Cross-flow) Blowers

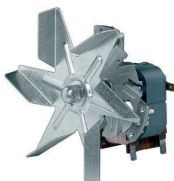


Provide even, low to medium velocity airflow over a wide area. Feature a narrow footprint and are available in many different lengths.

**Applications:** Fireplace inserts, pellet stoves, industrial cabinet cooling

**Size:** 4.7 in. to 24 in. (120 mm to 600 mm) CFM: 50 to 250

### Convection Fans



Features an AC motor mounted outside the hot area and a radial impeller made of sheet steel, stainless steel, or die-cast aluminum for mounting in high temperature applications.

**Applications:** Convection ovens

Note: Motor supplied bundled with blade, nut, and washer

**Size:** Ø4 in. to 9 in. (97 mm to 225 mm) CFM: 53 to 820

## Photo Controls



### E7/8/9 SERIES PHOTOCELL

- Designed to meet ANSI C136.10.
- 30 Amp rated general purpose relay
- 1000 Watt Tungsten, 1800 VA Ballast
- 3-pole locking type with solid brass blades



### P-103/P-104 SERIES PHOTOCELL

- Designed to meet UL 773A
- Less than 0.9Watts (avg.) at 120VAC
- 2000 Watt Tungsten, 1900VA Ballast
- SPST Thermal Bi-metal Switch



### P-101/P-102 SERIES PHOTOCELL

- Designed to meet ANSI C136.10.
- Fail Safe
- 1000 Watt Tungsten, 1800VA Ballast
- 3-pole locking-type with solid brass blades



### P-105 SERIES PHOTOCELL

- Designed to meet ANSI C136.24 & UL 773A
- Less than 0.9Watts (avg.) at 120VAC
- SPST Thermal Bi-metal Switch



### P-106 SERIES PHOTOCELL

- Designed to meet UL 773A
- Less than 0.9Watts (avg.) at 120VAC
- SPST Thermal Bi-metal Switch

