

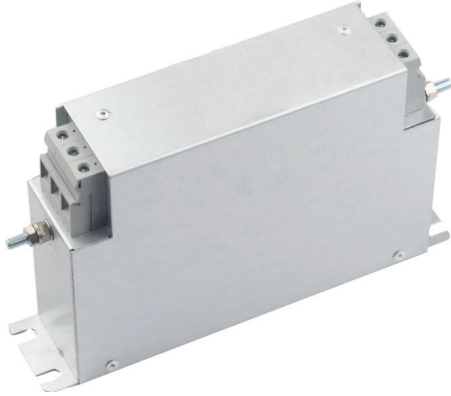
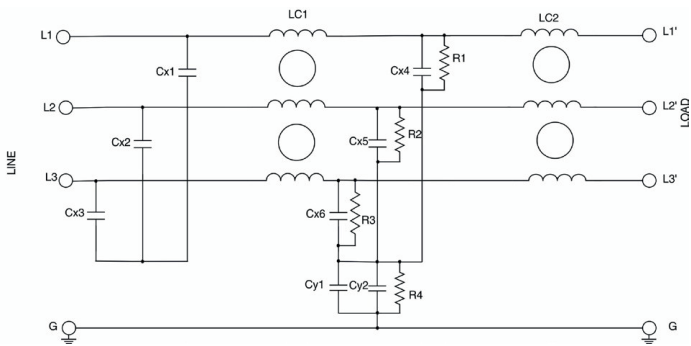
### Features

- High EMI attenuation
- Rated up to 230A
- Book-style with convenient size
- Choice of Leakage / Performance for each model

### Applications

- Inverters, converters
- Process automation equipment
- Machine tool and machinery equipment
- Three-phase power supplies

### Typical Circuit Diagram




### Approvals & Compliances



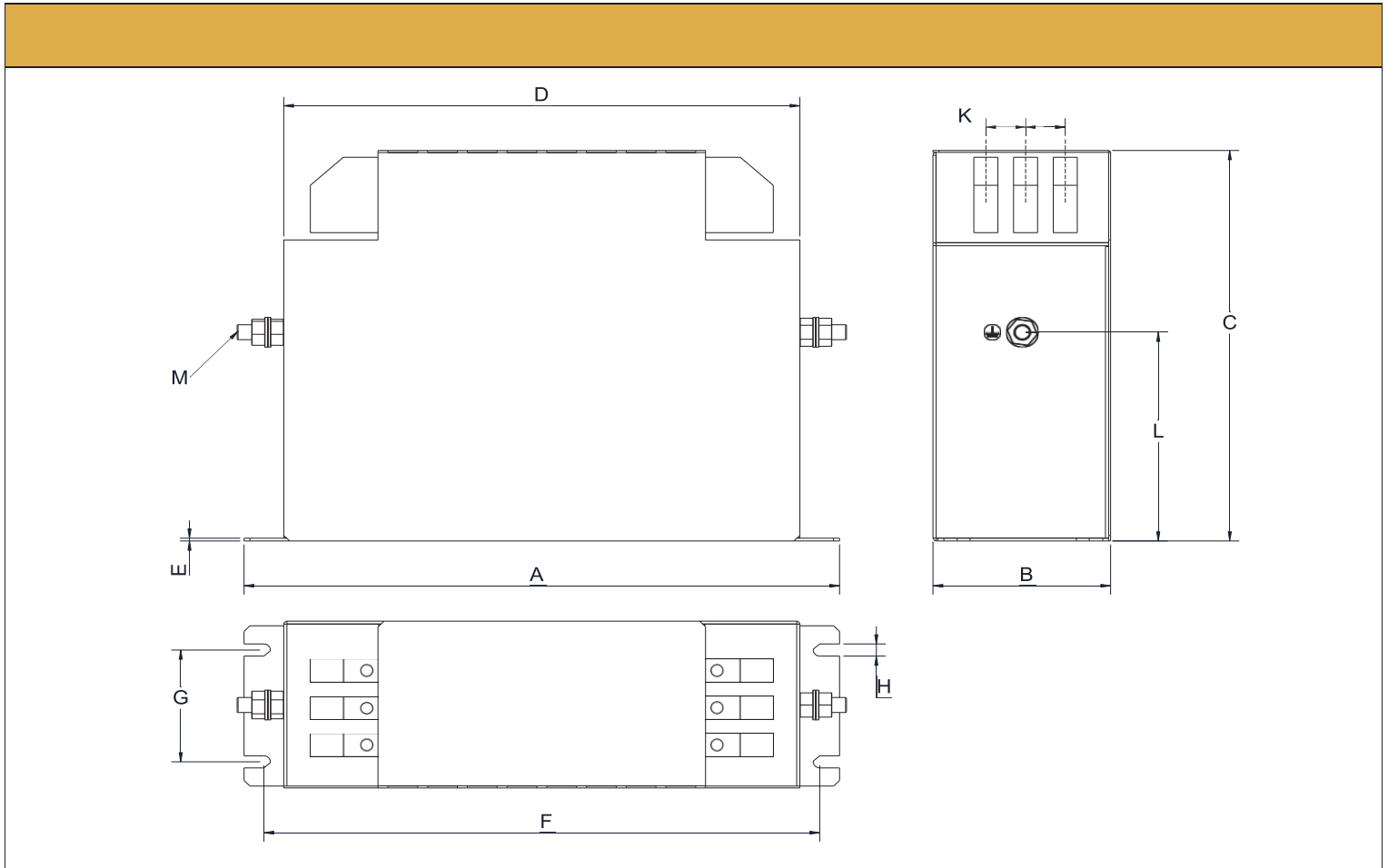
### Technical Specifications

Maximum continuous operating voltage:	530VAC
Operating Frequency:	50/60 Hz
Rated Currents:	10A to 230A @ 50°C
High Potential test voltage:	L -> G 2884 VDC for 2 sec L -> L 2279 VDC for 2 sec
Overload Capability:	4x rated current at switch on 135% of rated current for 15Mins
Flammability corresponding to:	UL 94 V-0 or better
Temperature range:	-40°C to +100°C
Climatic class:	40/100/21
Design corresponding to:	UL 60939-3 & IEC 60939-1&2
Protection category:	IP 20
Over-voltage category:	III acc. IEC 60664-1
Compliance with insulation requirement:	> 1MOhm acc. to IEC 60204-1

## Selection Table

Standard Performance Version								
Available Part Numbers	Current Rating @ 50°C (A)	Leakage current @ 520 VAC/50 Hz (mA)			Power loss 50Hz (W)	Termination	Weight Approx. (Kg)	Enclosure
		C03	C06	C09				
AMI-3087-10-06-C03-R01	10	0.4	-	-	7.5	06	0.7	Q
AMI-3087-10-06-C06-R01	10	-	2.2	-	7.5	06	0.7	Q
AMI-3087-10-06-C09-R01	10	-	-	4.2	7.5	06	0.7	Q
AMI-3087-16-06-C03-R01	16	0.4	-	-	9.5	06	0.8	R
AMI-3087-16-06-C06-R01	16	-	2.4	-	9.5	06	0.8	R
AMI-3087-16-06-C09-R01	16	-	-	4.3	9.5	06	0.8	R
AMI-3087-20-06-C03-R01	20	0.4	-	-	10	06	0.9	S
AMI-3087-20-06-C06-R01	20	-	2.5	-	10	06	0.9	S
AMI-3087-20-06-C09-R01	20	-	-	4.9	10	06	0.9	S
AMI-3087-25-06-C03-R01	25	0.4	-	-	11.5	06	1.0	S
AMI-3087-25-06-C06-R01	25	-	2.5	-	11.5	06	1.0	S
AMI-3087-25-06-C09-R01	25	-	-	4.9	11.5	06	1.0	S
AMI-3087-40-06-C03-R01	40	0.4	-	-	23	06	1.5	T
AMI-3087-40-06-C06-R01	40	-	2.5	-	23	06	1.5	T
AMI-3087-40-06-C09-R01	40	-	-	4.9	23	06	1.5	T
AMI-3087-50-16-C03-R01	50	0.4	-	-	25.5	16	2.1	U
AMI-3087-50-16-C06-R01	50	-	2.5	-	25.5	16	2.1	U
AMI-3087-50-16-C09-R01	50	-	-	4.9	25.5	16	2.1	U
AMI-3087-63-16-C03-R01	63	0.4	-	-	32.5	16	2.2	U
AMI-3087-63-16-C06-R01	63	-	2.5	-	32.5	16	2.2	U
AMI-3087-63-16-C09-R01	63	-	-	4.9	32.5	16	2.2	U
AMI-3087-80-35-C03-R01	80	0.4	-	-	33	35	3.4	F
AMI-3087-80-35-C06-R01	80	-	2.7	-	33	35	3.4	F
AMI-3087-80-35-C09-R01	80	-	-	5.6	33	35	3.4	F
AMI-3087-100-50-C03-R01	100	0.4	-	-	33.5	50	4.2	G
AMI-3087-100-50-C06-R01	100	-	2.7	-	33.5	50	4.2	G
AMI-3087-100-50-C09-R01	100	-	-	5.6	33.5	50	4.2	G
AMI-3087-125-50-C03-R01	125	0.4	-	-	37.5	50	4.6	G
AMI-3087-125-50-C06-R01	125	-	2.7	-	37.5	50	4.6	G
AMI-3087-125-50-C09-R01	125	-	-	5.6	37.5	50	4.6	G
AMI-3087-160-95-C03-R01	160	0.4	-	-	38.5	95	6	H
AMI-3087-160-95-C06-R01	160	-	2.7	-	38.5	95	6	H
AMI-3087-160-95-C09-R01	160	-	-	5.6	38.5	95	6	H
AMI-3087-230-95-C03-R01	230	0.4	-	-	48	95	8.8	V
AMI-3087-230-95-C06-R01	230	-	2.7	-	48	95	8.8	V
AMI-3087-230-95-C09-R01	230	-	-	5.9	48	95	8.8	V


## Mechanical Drawing



## Mechanical Dimensions:

	A	B	C	D	E	F	G	H	K	L±1	M**
A	185	40	120	157	0.8	175	20	4.5	11	76	M5
B	195	45	140	164	0.8	180	25	5.4	11	93	M5
C	210	45	145	174	0.8	195	25	5.4	13	96	M5
D	235	50	168	207	1.0	220	30	5.4	13	115	M6
E	255	65	180	226	1.0	240	45	5.4	16	120	M6
F	290	80	205	250	1.2	270	50	6.5	22	110	M6
G	300	90	210	260	1.5	280	60	6.5	25	112	M8
H	310	100	225	270	1.5	290	70	6.5	28	110	M10
I	230	50	132	203	0.8	220	30	4.5	12.5	88	M5
J	230	55	159	198	0.8	215	35	5.4	13	112	M5
K	245	55	167	212	0.8	230	35	5.4	13	118	M5
L	265	60	191	237	1.0	250	40	5.4	13	135	M6
M	265	70	194	237	1.0	250	50	5.4	16	133	M6
N	310	95	220	270	1.2	290	65	6.5	22	125	M6
O	320	95	230	280	1.5	300	65	6.5	25	127	M8
P	330	100	240	290	1.5	310	70	6.5	30	127	M10
Q	180	40	112	153	0.8	170	20	4.5	11	68	M5
R	200	45	120	170	0.8	185	25	5.4	11	76	M5
S	205	45	132	173	0.8	190	25	5.4	13	83	M5
T	215	50	147	185	1.0	200	30	5.4	13	95	M6
U	220	65	180	186	1.0	205	45	5.4	16	120	M6
	350	105	240	310	1.5	330	70	6.5	30.5	125	M10

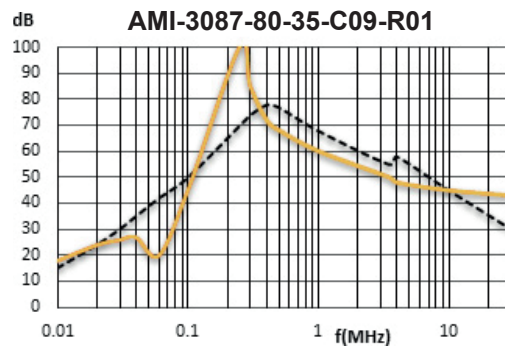
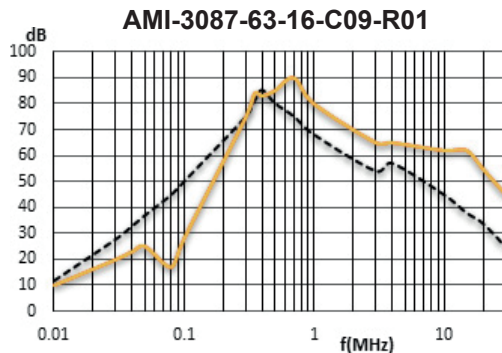
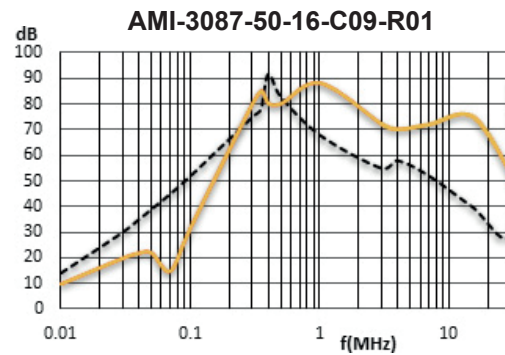
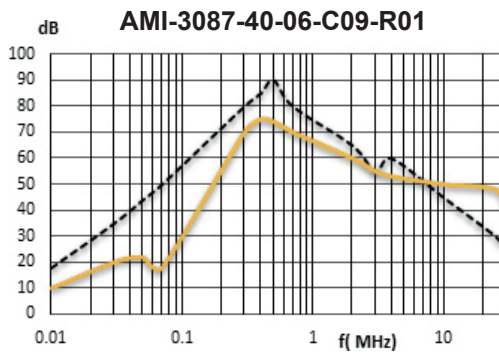
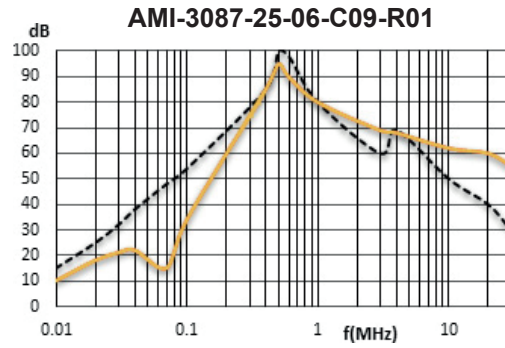
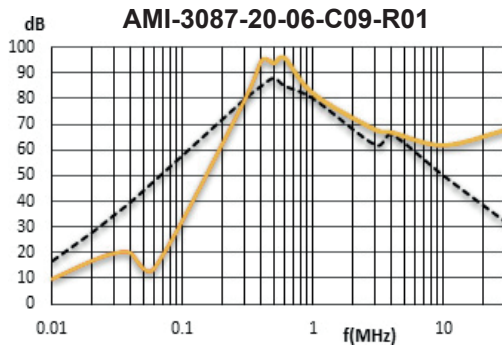
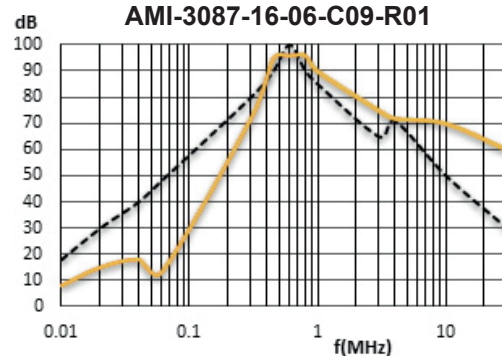
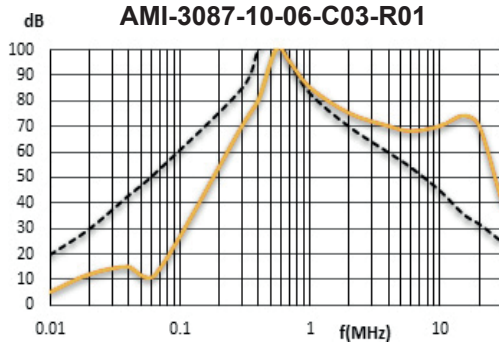
All Dimensions in mm: 1 inch=25.4mm. Tolerance according : ISO 2768-C

	06	16	35	50	95
Wire range	8 to 26 AWG	4 to 20 AWG	2 to 8 AWG	6 to 1/0 AWG	AWG 4/0
Stripping Length	9mm	16mm	19mm	24mm	27mm
Recommended torque	1.19 to 1.46	2.48 to 2.82	2.48 to 2.82	4.29 to 4.51	3.5-6

## Typical Insertion Loss

According to CISPR17 in 50  $\Omega$  system

— Common Mode / Asymmetrical (L-G)  
 — Differential Mode / Symmetrical (L-L)



## Typical Insertion Loss

According to CISPR17 in 50 Ω system

— Common Mode / Asymmetrical (L-G)  
 — Differential Mode / Symmetrical (L-L)

