

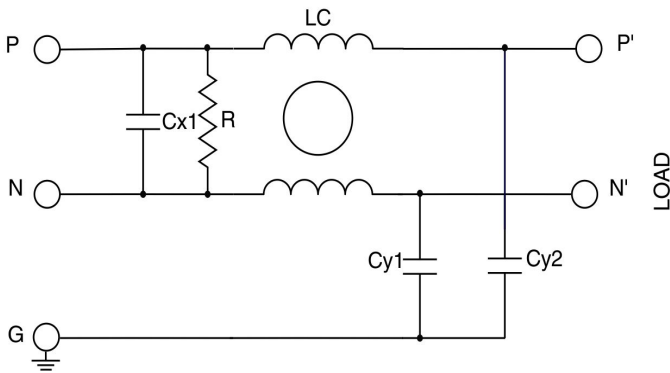
Features

- Standard attenuation performance
- Rated up to 60A
- Filters offer an optimized filter range for high performance AC & DC applications.
- Designed for easy and fast chassis mounting

Applications

- Power Systems
- Electronic Equipment
- Medical equipment
- Electronic data processing equipment

Typical Circuit Diagram





Approvals & Compliances





Technical Specifications

Maximum continuous operating voltage:	250 VAC, 50/60Hz, 250 VDC
Operating Frequency:	DC to 400Hz
Rated Currents:	1A to 60A @40°C
High Potential test voltage:	P to N 1075VDC for 2 Sec P to G 2250VDC for 2 Sec P to G 1500VAC for 2 Sec (M Types)
Overload Capability:	4x rated current at switch on 1.5x rated current for 1 minute, once per hour
Design corresponding to:	UL 60939-3 and IEC 60939-1&2
Temperature range:	-25°C to +100°C
Climatic category:	25/100/21
Flammability corresponding to:	UL 94 V-0 or better
Protection category:	IP 20

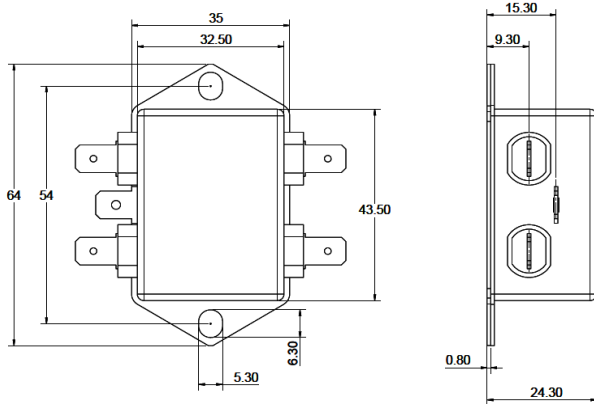
Selection Table

STANDARD VERSION						
Available Part Numbers	Current Rating @ 40°C (A)	Leakage current @ 250 VAC/50 Hz (mA)	Power loss @ 40°C/ 50Hz (W)	Termination		Weight Approx. (g)
				 6.3 x 0.8		
AMI-10 0-1-1	1		0.8	-1	-	70
AMI-1010-3-1	3	0.37	1.1	-1	-	70
AMI-1010-6-1	6	0.37	1.7	-1	-	70
AMI-1010-10-1	10	0.37	2.5	-1	-	90
AMI-1010-12-1	12	0.37	3.6	-1	-	90
AMI-1010-16-1	16	0.37	2.5	-1	-	150
AMI-1010-20-1	20	0.37	3.8	-1	-	220
AMI-1010-30-M4	30	0.8	6.3	-	M4	480
AMI-1010-60-M6	60	0.8	14.7	-	M6	1200

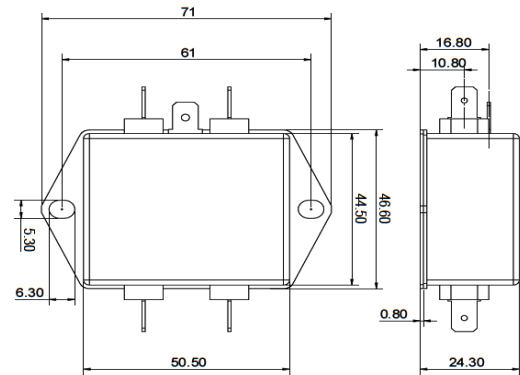
MEDICAL VERSION						
Available Part Numbers	Current Rating @ 40°C (A)	Leakage current @ 250 VAC/50 Hz (mA)	Power loss @ 40°C/ 50Hz (W)	Termination		Weight Approx. (g)
				 6.3 x 0.8		
AMI-10 0B-1-1	1	0	0.8	-1	-	70
AMI-1010B-3-1	3	0	1.1	-1	-	70
AMI-1010B-6-1	6	0	1.7	-1	-	70
AMI-1010B-10-1	10	0	2.5	-1	-	90
AMI-1010B-12-1	12	0	3.6	-1	-	90
AMI-1010B-16-1	16	0	2.5	-1	-	150
AMI-1010B-20-1	20	0	3.8	-1	-	220
AMI-1010B-30-M4	30	0	6.3	-	M4	480
AMI-1010B-60-M6	60	0	14.7	-	M6	1200

Mechanical Drawing

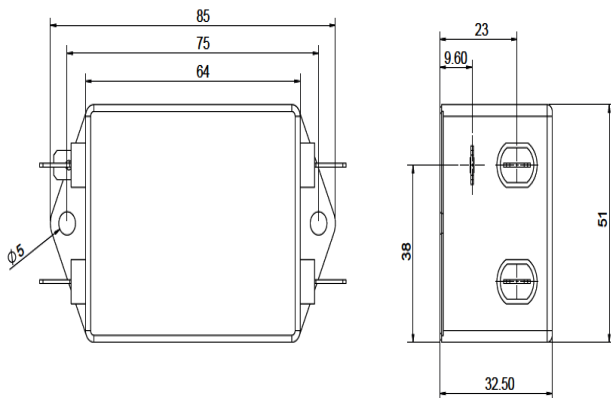
Connection style -1, 1A to 12A types



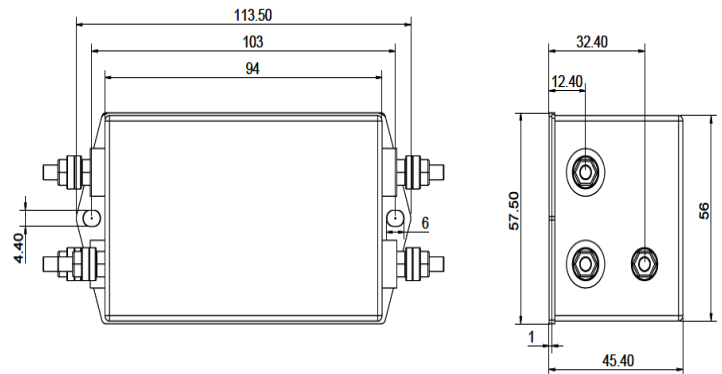
Connection style -1, 3A to 16A types



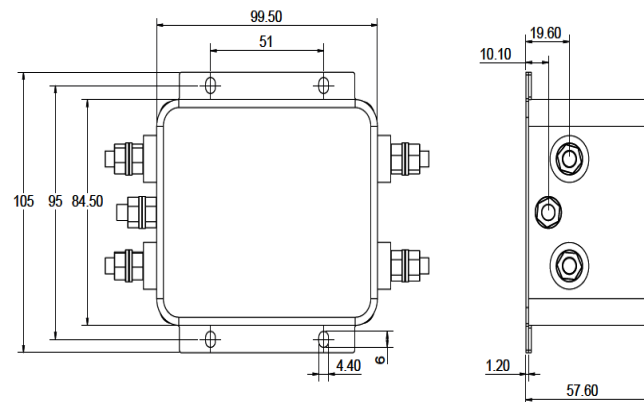
Connection style -1, 20A types



Connection style -1, 30A types



Connection style -6, 60A types

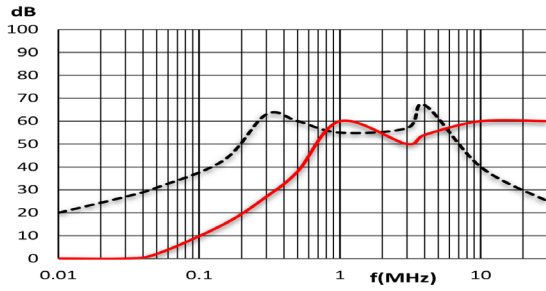


Typical Insertion Loss

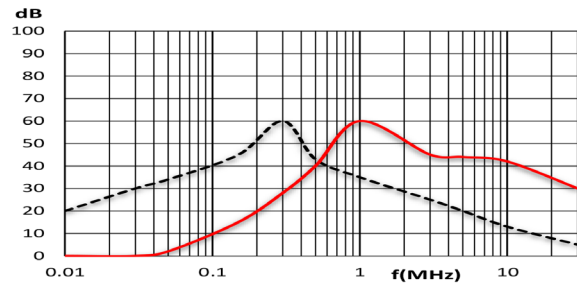
According to CISPR17 in 50 Ω system

— Common Mode / Asymmetrical (L-G)
 — Differential Mode / Symmetrical (L-L)

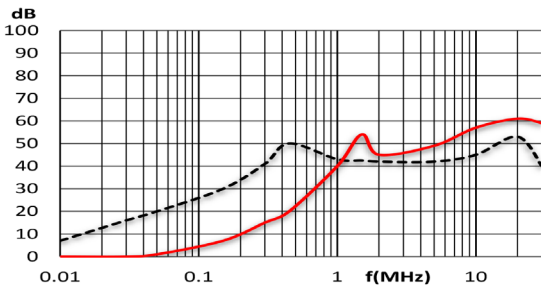
1A Standard Version



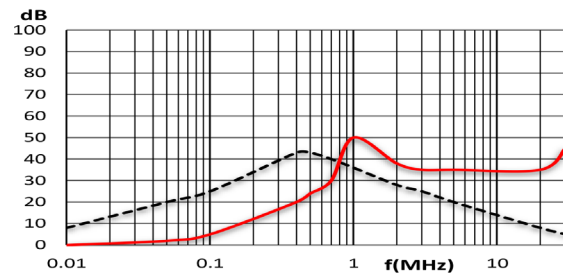
Medical Version



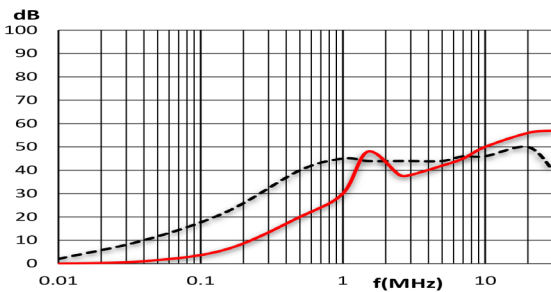
2A Standard Version



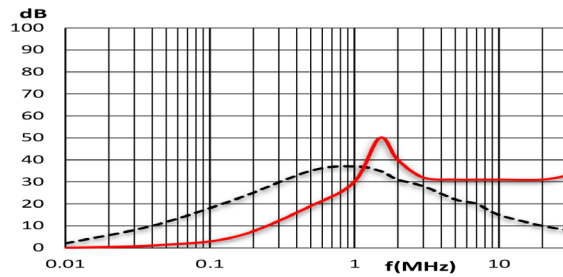
Medical Version



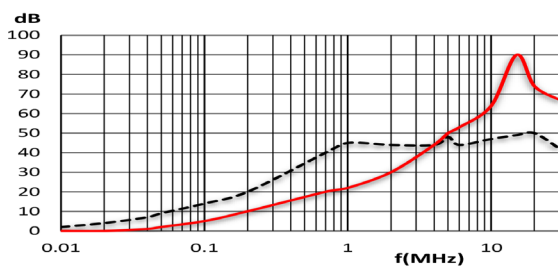
3A Standard Version



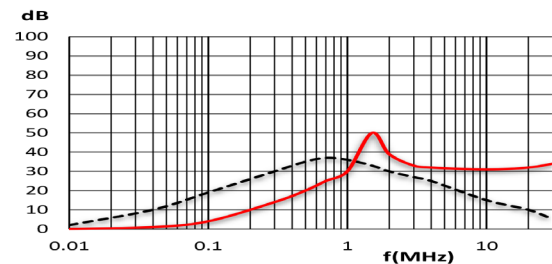
Medical Version



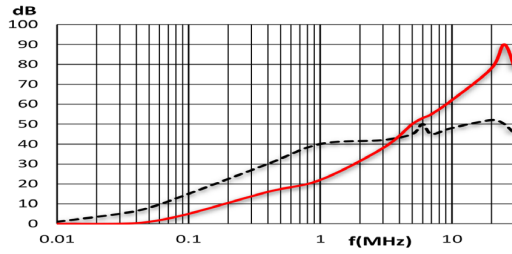
3A Standard Version



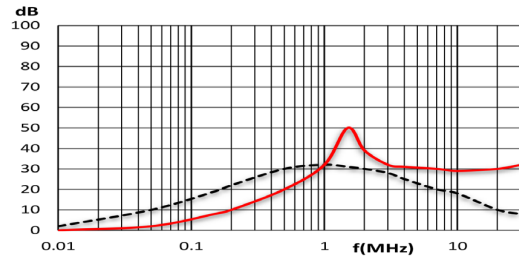
Medical Version



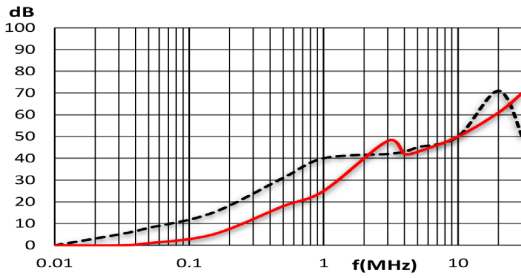
10A Standard Version



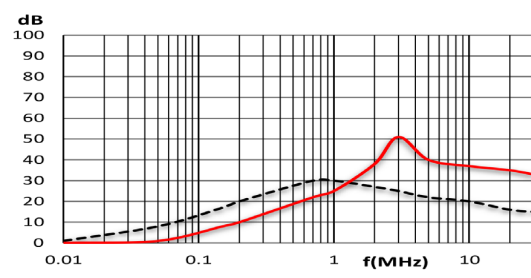
Medical Version



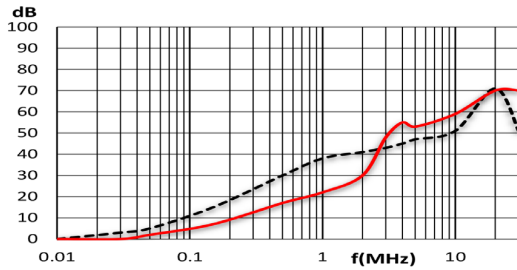
12A Standard Version



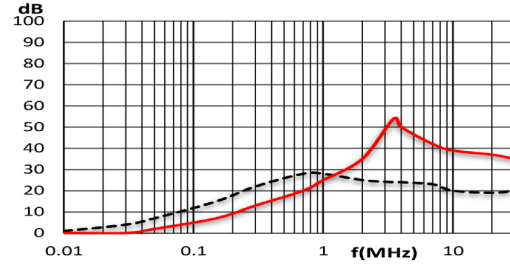
Medical Version



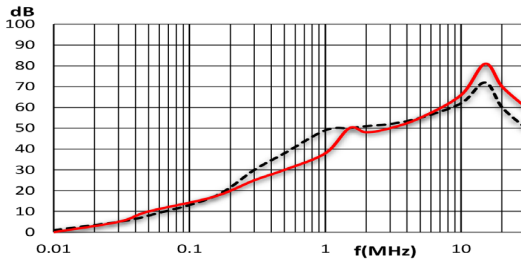
16A Standard Version



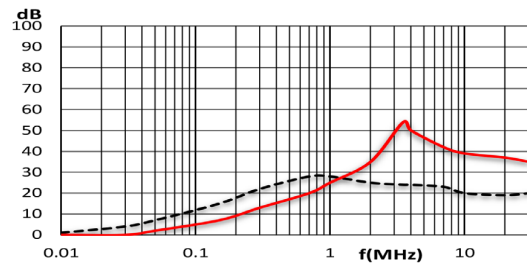
Medical Version



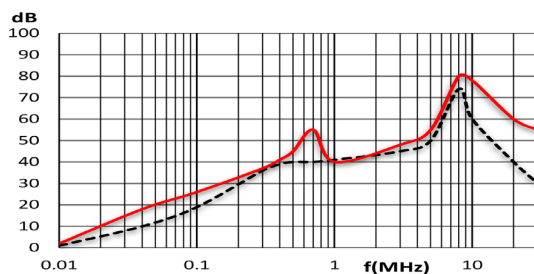
20A Standard Version



Medical Version



30A Standard Version



Medical Version

