

Features

- Stainless steel metal case, surface sprayed, high mechanical strength and corrosion resistance.
- Rectangular style filter are physically isolated within RFI tight terminal compartments. The lids to these compartment are supplied with both RFI and resilient gaskets to provide excellent protection against radiated interference.
- Easy to install and safe.

Applications

- For shielded room, anechoic chamber, shelter, shielded cabinet, etc.
- Single phase two lines, three phase four lines EMI filter, current ranges from 16A-200A.



Approvals & Compliances



Technical Specifications

| | |
|--|---|
| Rated Voltage For Single Phase Two Line | Line to Neutral: 250VAC |
| Rated Voltage For Three Phase Four Line: | Line to Line: 440 VAC Line to Neutral: 250VAC |
| Operating Frequency | DC~60Hz |
| Climate Category | 25/085/21 |
| High Potential Test Voltage | Line to Ground: 1000 VDC Line to Line: 1000VDC |
| Performance | 100dB from 14KHz to 40GHz |

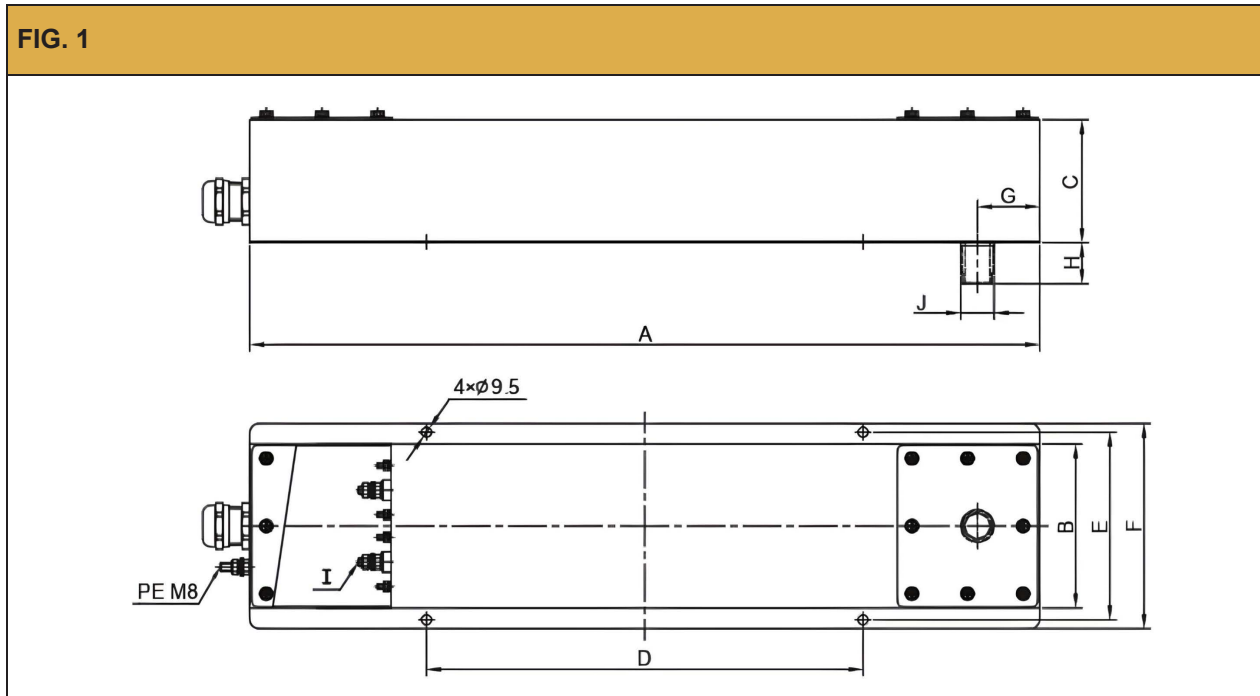
Selection Table

| Filter | Rated Current IR (A) | Leakage Current I _g (A) | Rated Voltage VR | Voltage Drop V | Insertion Loss (dB) | Dimension |
|---------------|----------------------|------------------------------------|------------------|----------------|-----------------------|-----------|
| AMI-8201J-16 | 2x16 | <0.2A | 250VAC | <1% | 100dB, 14KHz~10/40GHz | Fig.1 |
| AMI-8201J-32 | 2x32 | <0.2A | 250VAC | <1% | 100dB, 14KHz~10/40GHz | Fig.1 |
| AMI-8201J-50 | 2x50 | <0.2A | 250VAC | <1% | 100dB, 14KHz~10/40GHz | Fig.1 |
| AMI-8201J-63 | 2x63 | <0.2A | 250VAC | <1% | 100dB, 14KHz~10/40GHz | Fig.1 |
| AMI-8201J-100 | 2x100 | <0.2A | 250VAC | <1% | 100dB, 14KHz~10/40GHz | Fig.1 |
| AMI-8201J-200 | 2x200 | <0.2A | 250VAC | <1% | 100dB, 14KHz~10/40GHz | Fig.1 |
| AMI-8401J-16 | 4x16 | <0.2A | 440/250VAC | <1% | 100dB, 14KHz~10/40GHz | Fig.2 |
| AMI-8401J-32 | 4x32 | <0.2A | 440/250VAC | <1% | 100dB, 14KHz~10/40GHz | Fig.2 |
| AMI-8401J-50 | 4x50 | <0.2A | 440/250VAC | <1% | 100dB, 14KHz~10/40GHz | Fig.2 |
| AMI-8401J-63 | 4x63 | <0.2A | 440/250VAC | <1% | 100dB, 14KHz~10/40GHz | Fig.2 |
| AMI-8401J-100 | 4x100 | <0.2A | 440/250VAC | <1% | 100dB, 14KHz~10/40GHz | Fig.2 |
| AMI-8401J-200 | 4x200 | <0.2A | 440/250VAC | <1% | 100dB, 14KHz~10/40GHz | Fig.3 |
| AMI-8211J-16 | 2x16 | <0.2A | 250VAC | <3.6% | 100dB, 14KHz~10/40GHz | Fig.1 |
| AMI-8211J-32 | 2x32 | <0.2A | 250VAC | <2.9% | 100dB, 14KHz~10/40GHz | Fig.1 |
| AMI-8211J-50 | 2x50 | <0.2A | 250VAC | <2.3% | 100dB, 14KHz~10/40GHz | Fig.1 |
| AMI-8211J-63 | 2x63 | <0.2A | 250VAC | <1.9% | 100dB, 14KHz~10/40GHz | Fig.1 |
| AMI-8211J-100 | 2x100 | <0.2A | 250VAC | <1.2% | 100dB, 14KHz~10/40GHz | Fig.1 |
| AMI-8211J-200 | 2x200 | <0.2A | 250VAC | <0.6% | 100dB, 14KHz~10/40GHz | Fig.1 |
| AMI-8411J-16 | 4x16 | <0.2A | 440/250VAC | <3.6% | 100dB, 14KHz~10/40GHz | Fig.2 |
| AMI-8411J-32 | 4x32 | <0.2A | 440/250VAC | <2.9% | 100dB, 14KHz~10/40GHz | Fig.2 |
| AMI-8411J-50 | 4x50 | <0.2A | 440/250VAC | <2.3% | 100dB, 14KHz~10/40GHz | Fig.2 |
| AMI-8411J-63 | 4x63 | <0.2A | 440/250VAC | <1.9% | 100dB, 14KHz~10/40GHz | Fig.2 |
| AMI-8411J-100 | 4x100 | <0.2A | 440/250VAC | <1.2% | 100dB, 14KHz~10/40GHz | Fig.2 |
| AMI-8411J-200 | 4x200 | <0.2A | 440/250VAC | <0.6% | 100dB, 14KHz~10/40GHz | Fig.3 |
| AMI-8221J-16 | 2x16 | <4A | 250VAC | <9.9% | 100dB, 14KHz~10/40GHz | Fig.1 |
| AMI-8221J-32 | 2x32 | <4A | 250VAC | <8.0% | 100dB, 14KHz~10/40GHz | Fig.1 |
| AMI-8221J-50 | 2x50 | <4A | 250VAC | <6.2% | 100dB, 14KHz~10/40GHz | Fig.1 |
| AMI-8221J-63 | 2x63 | <4A | 250VAC | <5.2% | 100dB, 14KHz~10/40GHz | Fig.1 |
| AMI-8221J-100 | 2x100 | <6A | 250VAC | <3.3% | 100dB, 14KHz~10/40GHz | Fig.1 |
| AMI-8221J-200 | 2x200 | <9A | 250VAC | <1.8% | 100dB, 14KHz~10/40GHz | Fig.1 |
| AMI-8421J-16 | 4x16 | <4A | 440/250VAC | <9.9% | 100dB, 14KHz~10/40GHz | Fig.2 |
| AMI-8421J-32 | 4x32 | <4A | 440/250VAC | <8.0% | 100dB, 14KHz~10/40GHz | Fig.2 |
| AMI-8421J-50 | 4x50 | <4A | 440/250VAC | <6.2% | 100dB, 14KHz~10/40GHz | Fig.2 |
| AMI-8421J-63 | 4x63 | <4A | 440/250VAC | <5.2% | 100dB, 14KHz~10/40GHz | Fig.2 |
| AMI-8421J-100 | 4x100 | <6A | 440/250VAC | <3.3% | 100dB, 14KHz~10/40GHz | Fig.2 |
| AMI-8421J-200 | 4x200 | <9A | 440/250VAC | <1.8% | 100dB, 14KHz~10/40GHz | Fig.3 |

Note: 801J, 8401J series are suitable for power supply of internal lighting, instruments and other equipment in shield room: 8211J, 8221J, 8411J, 8421J series are suitable for the power supply of EUT (50/60Hz) equipment in the electromagnetic compatibility laboratory of military standard (MIL-ST P -461F, GJB151B-2013).

Case Styles

FIG. 1

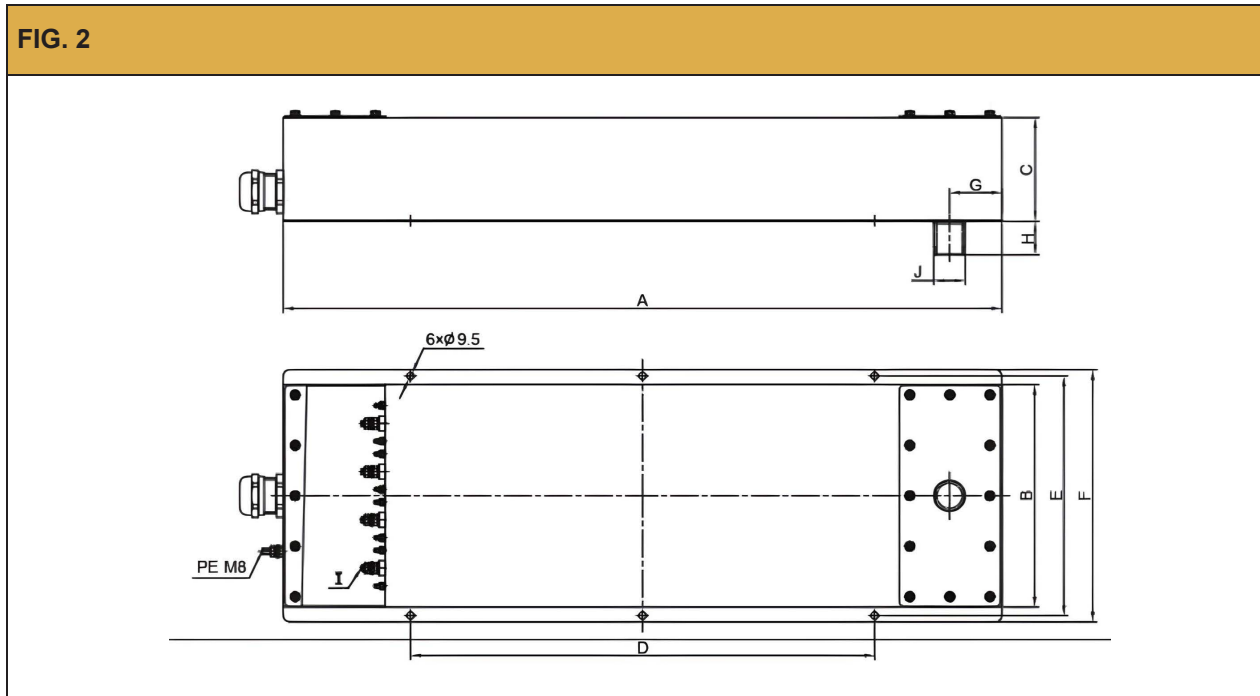


Case Dimensions:

| Filter | A | B | C | D | E | F | G | H | I | J |
|---------------|------|-----|-----|-----|-----|-----|----|----|-------|-----|
| AMI-8201J-16 | 560 | 160 | 120 | 250 | 183 | 200 | 60 | 35 | 4xM6 | M24 |
| AMI-8211J-16 | 560 | 160 | 120 | 250 | 183 | 200 | 60 | 35 | 4xM6 | M24 |
| AMI-8201J-32 | 560 | 160 | 120 | 250 | 183 | 200 | 60 | 35 | 4xM6 | M24 |
| AMI-8211J-32 | 560 | 160 | 120 | 250 | 183 | 200 | 60 | 35 | 4xM6 | M24 |
| AMI-8201J-50 | 760 | 160 | 120 | 420 | 183 | 200 | 60 | 40 | 4xM6 | M33 |
| AMI-8211J-50 | 760 | 160 | 120 | 420 | 183 | 200 | 60 | 40 | 4xM6 | M33 |
| AMI-8201J-63 | 760 | 160 | 120 | 420 | 183 | 200 | 60 | 40 | 4xM6 | M33 |
| AMI-8211J-63 | 760 | 160 | 120 | 420 | 183 | 200 | 60 | 40 | 4xM6 | M33 |
| AMI-8221J-16 | 960 | 200 | 140 | 620 | 223 | 240 | 60 | 40 | 4xM6 | M33 |
| AMI-8221J-32 | 960 | 200 | 140 | 620 | 223 | 240 | 60 | 40 | 4xM6 | M33 |
| AMI-8221J-50 | 960 | 200 | 140 | 620 | 223 | 240 | 60 | 40 | 4xM6 | M33 |
| AMI-8221J-63 | 960 | 200 | 140 | 620 | 223 | 240 | 60 | 40 | 4xM6 | M33 |
| AMI-8201J-100 | 760 | 160 | 120 | 420 | 183 | 200 | 60 | 40 | 4xM8 | M33 |
| AMI-8211J-100 | 760 | 160 | 120 | 420 | 183 | 200 | 60 | 40 | 4xM8 | M33 |
| AMI-8221J-100 | 960 | 200 | 140 | 620 | 223 | 240 | 60 | 40 | 4xM8 | M33 |
| AMI-8201J-200 | 880 | 200 | 150 | 540 | 223 | 240 | 70 | 45 | 4xM10 | M48 |
| AMI-8211J-200 | 1200 | 200 | 150 | 860 | 223 | 240 | 70 | 45 | 4xM10 | M48 |
| AMI-8221J-200 | 960 | 240 | 150 | 620 | 263 | 280 | 70 | 45 | 4xM10 | M48 |

Case Styles

FIG. 2

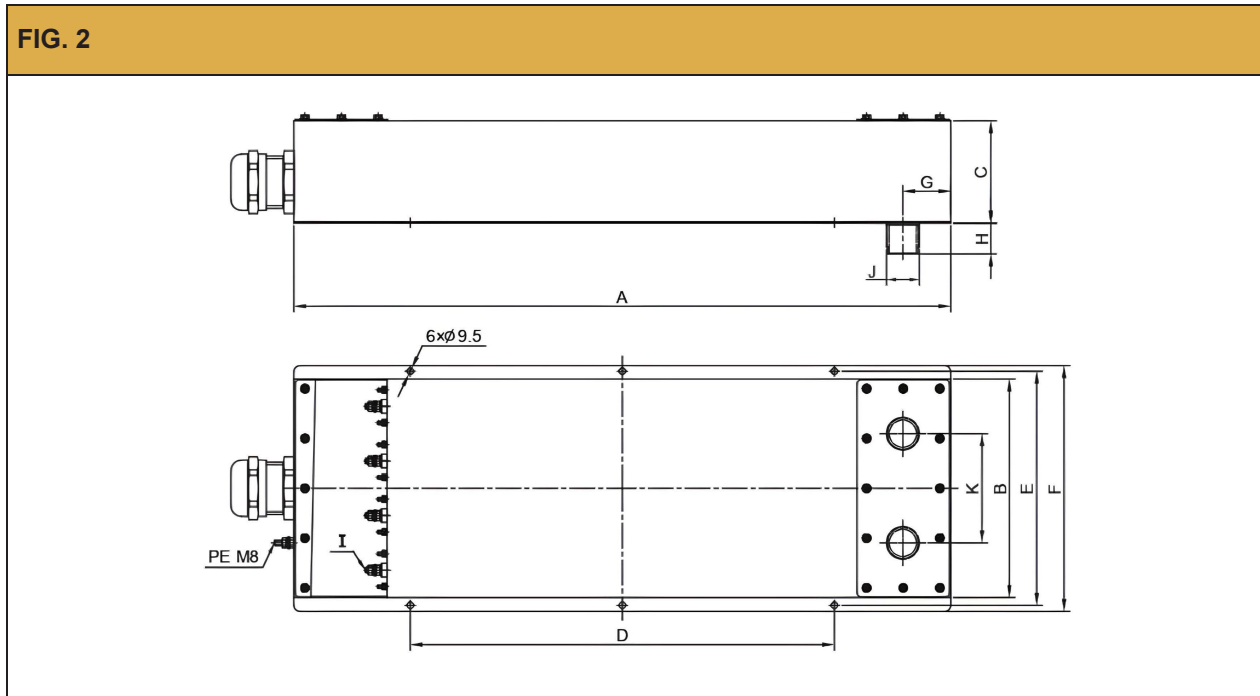


Case Dimensions:

| Filter | A | B | C | D | E | F | G | H | I | J |
|---------------|-----|-----|-----|-----|-----|-----|----|----|------|-----|
| AMI-8401J-16 | 800 | 300 | 140 | 460 | 323 | 340 | 70 | 40 | 8xM6 | M33 |
| AMI-8411J-16 | 800 | 300 | 140 | 460 | 323 | 340 | 70 | 40 | 8xM6 | M33 |
| AMI-8401J-32 | 800 | 300 | 140 | 460 | 323 | 340 | 70 | 40 | 8xM6 | M33 |
| AMI-8411J-32 | 800 | 300 | 140 | 460 | 323 | 340 | 70 | 40 | 8xM6 | M33 |
| AMI-8401J-50 | 960 | 300 | 140 | 620 | 323 | 340 | 70 | 45 | 8xM6 | M42 |
| AMI-8411J-50 | 960 | 300 | 140 | 620 | 323 | 340 | 70 | 45 | 8xM6 | M42 |
| AMI-8401J-63 | 960 | 300 | 140 | 620 | 323 | 340 | 70 | 45 | 8xM6 | M42 |
| AMI-8411J-63 | 960 | 300 | 140 | 620 | 323 | 340 | 70 | 45 | 8xM6 | M42 |
| AMI-8421J1-16 | 960 | 400 | 140 | 620 | 423 | 440 | 70 | 45 | 8xM6 | M42 |
| AMI-8421J-32 | 960 | 400 | 140 | 620 | 423 | 440 | 70 | 45 | 8xM6 | M42 |
| AMI-8421J-50 | 960 | 400 | 140 | 620 | 423 | 440 | 70 | 45 | 8xM6 | M42 |
| AMI-8421J-63 | 960 | 400 | 140 | 620 | 423 | 440 | 70 | 45 | 8xM6 | M42 |
| AMI-8401J-100 | 960 | 300 | 140 | 620 | 323 | 340 | 70 | 45 | 8xM8 | M42 |
| AMI-8411J-100 | 960 | 300 | 140 | 620 | 323 | 340 | 70 | 45 | 8xM8 | M42 |
| AMI-8421J-100 | 960 | 400 | 140 | 620 | 423 | 440 | 70 | 45 | 8xM8 | M42 |

Case Styles

FIG. 2



Case Dimensions:

| Filter | A | B | C | D | E | F | G | H | I | J | K |
|---------------|------|-----|-----|-----|-----|-----|----|----|-------|-------|-----|
| AMI-8401J-200 | 960 | 320 | 150 | 620 | 343 | 360 | 70 | 45 | 8xM10 | 2xM48 | 160 |
| AMI-8411J-200 | 1400 | 320 | 150 | 900 | 343 | 360 | 70 | 45 | 8xM10 | 2xM48 | 160 |
| AMI-8421J-200 | 960 | 480 | 150 | 620 | 503 | 520 | 70 | 45 | 8xM10 | 2xM48 | 160 |