

General EMI Filter with High Attenuation Performance

General Purpose EMI Filter AMI-22 Series



- Rated current from 1 to 60 A
- Single stage filter
- High differential-mode performance
- Optional medical version (Type B)
- Optional safety version (Type A)

Approvals:



Technical Specifications

Maximum continuous operating voltage: 250VAC, 50/60Hz

Operating frequency: DC to 400Hz

Rated currents: 1 to 60A @ 40°C max.

High potential test voltage: L → PE 3000VDC for 2 sec (standard types)

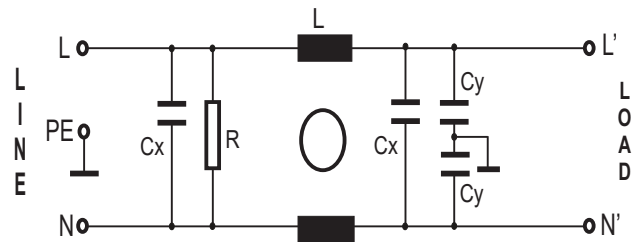
L → PE 3500VDC for 2 sec (B types)

L → N 1100VDC for 2 sec

Temperature range (operation and storage): -25°C to +100°C (25/100/21)

Design corresponding to: UL 1283

CIRCUIT DIAGRAM:



Features and Benefits

- AMI-22 Single-stage filters are designed for easy and fast chassis mounting.
- The AMI-22 filters are also available as B versions with no Y-capacitors for medical applications as well as A versions with low capacitance for safety critical applications with requirements for low leakage currents.
- All filters provide a general purpose conducted attenuation performance, based on chokes with high saturation resistance and excellent thermal behavior.
- The AMI-22 Filter can be used to cover a broad range of uses and they offer a good size/amperage ratio.
- AMI-22 filters are also available as dual stage filters (AMI-26 & AMI-27 series).
- Various terminal options allow you to select the desired connection style.

Typical Applications

- Consumer electronics
- Computing & accessories
- Residential appliances
- Medical accessories
- Electronic data processing equipment
- Office equipment
- Power supplies

