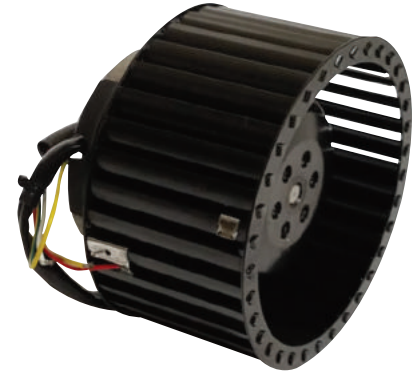


AC Motorized Impellers



Motor Features

Motor Life:

- Ball bearing design ensures long life and low friction at high temperatures

Motor Safety

- All standard motors are UL approved
- Additional agency approvals available including TUV/CE
- Standard models constructed to IP54 rating

Motor Construction

- Rotor body available in natural finish or black coated metal
- Stator cover material is cast aluminum for durability

Motor Mounting

- Mounting stator side via tapped holes in casting
- Blower can be mounted using outlet flange holes or holes near blower inlet

Terminations

- Leads or custom connectors

Insulation System

- Class B or F on standard models

Additional Components

- Axial fans available with grille fan guard and capacitor/wiring box with strain relief
- Centrifugal blowers available with or without blower housing

Motor Specifications

Fan Configuration	Diameter (mm)	Voltage AC	Frequency (Hz)	Input Power (Watts)	Insulation Class	Bearing Type	Impeller Material	Shaft Material	Speeds Agency	Agency
Axial	200-900	115-230	50/60, 50, 60	33-1300	B or F	Ball Bearing	Sheet Steel (Black)	Stainless, or High Carbon Steel	Single or Dual	UL, CE
Centrifugal	120-450	115-230	50/60, 50, 60	67-520	B or F	Ball Bearing	Sheet Steel (Black or Galvanized)	Stainless, or High Carbon Steel	Single or Dual	UL, CE
Backwards Incline	133-630	230-400	50/60, 50, 60	40-500	B or F	Ball Bearing	PAGE, Steel, Aluminum	Stainless, or High Carbon Steel	Single or Dual	UL, CE

