

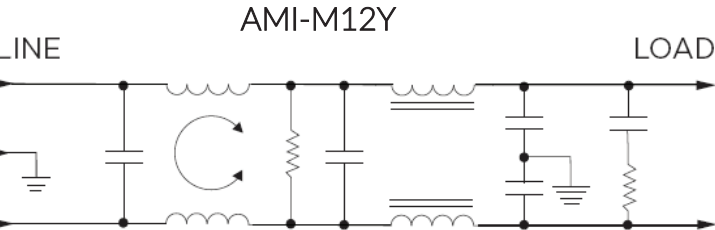
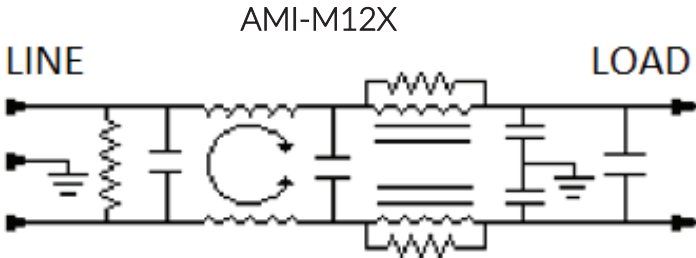
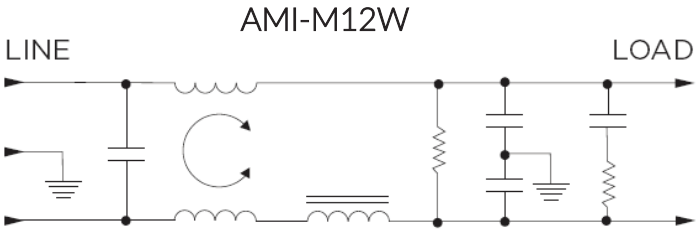
### Features

- General purpose filtering
- High CM & DM attenuation
- Rated up to 20A
- Choice of termination

### Applications

- Electrical and Electronic equipment
- Consumer goods
- Home appliances
- Office equipment

### Typical Circuit Diagram



### Approvals & Compliances



### Technical Specifications

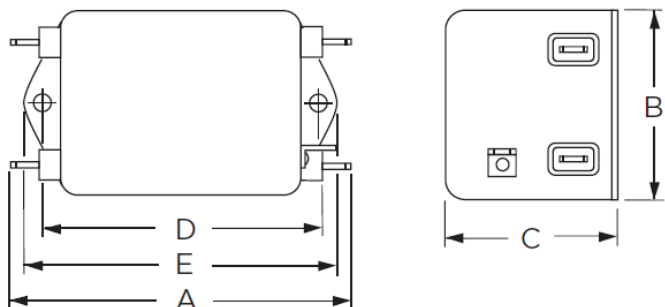
Maximum Continuous Operating Voltage	250 VAC Max
Operating Frequency	50/60Hz
Rated Current	10 to 20A @40°C
Temperature range	-10°C to +40°C
High Potential Test Voltage	Line to Ground: 2250 VDC Line to Line: 1450 VDC

## Selection Table

AMI Designation	Input/output Style			Current Rating	Inductance	Capacitance		Resistor	Leakage Current @ 120 VAC 60Hz/250 VAC 50 Hz	TIL Insertion Loss	Case Style
						Cx	Cy				
Available Part Numbers	6.3mm Spade Terminals	Wire Leads	Threaded Bolts		mH	nF	pF	KΩ	mA		
						AMI-M12W-1-10-C	1				
AMI-M12W-3-10-C	-	3	-	10	9.5	1770	4000	165	0.30/0.50	001	C
AMI-M12W-1-10-D	1	-	-	10	9.5	1770	10000	165	0.75/1.2	004	A
AMI-M12W-3-10-D	-	3	-	10	9.5	1770	10000	165	0.75/1.2	004	C
AMI-M12X-1-15-C	1	-	-	15	5.07	2072	4000	165	0.30/0.50	002	B
AMI-M12X-6-15-C	-	-	6	15	5.07	2072	4000	165	0.30/0.50	002	D
AMI-M12X-1-15-D	1	-	-	15	5.07	2075	15000	165	0.75/1.2	005	B
AMI-M12X-6-15-D	-	-	6	15	5.07	2075	15000	165	0.75/1.2	005	D
AMI-M12Y-1-20-C	1	-	-	20	3.88	2770	4000	110	0.30/0.50	003	B
AMI-M12Y-6-20-C	-	-	6	20	3.88	2770	4000	110	0.30/0.50	003	D
AMI-M12Y-1-20-D	1	-	-	20	3.88	2770	15000	110	0.75/1.2	006	B
AMI-M12Y-6-20-D	-	-	6	20	3.88	2770	15000	110	0.75/1.2	006	D

## Case Styles

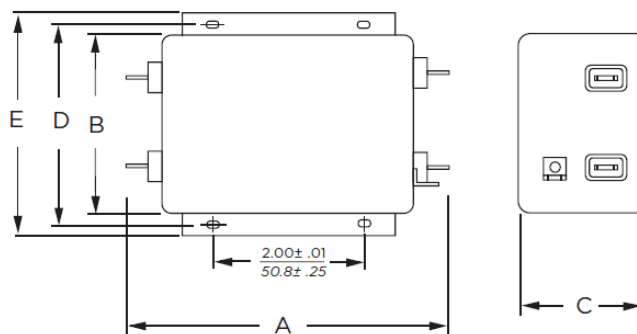
### STYLE A



Typical Dimensions:

- Line/Load Terminals (4): .250 [6.3] with .07 [1.8] Dia. hole
- Ground Terminal (1): .250 [6.3] with .07 x .16 [1.8 x 3.8] slot
- Mounting Holes (2): .188 [4.78] Dia.

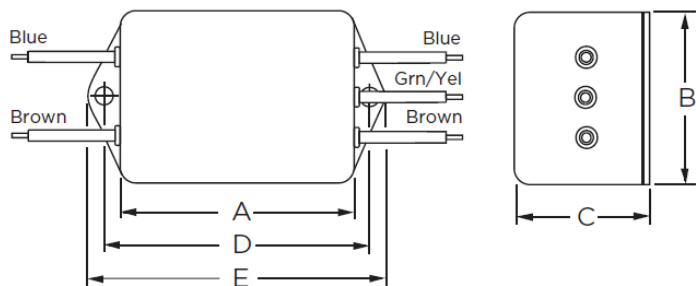
### STYLE B



Typical Dimensions:

- Line/Load Terminals (4): .250 [6.3] with .07 [1.8] Dia. hole
- Ground Terminal (1): .250 [6.3] with .07 x .16 [1.8 x 3.8] slot
- Mounting Slots (4): .250 x .156 [6.35 x 3.96] Dia.

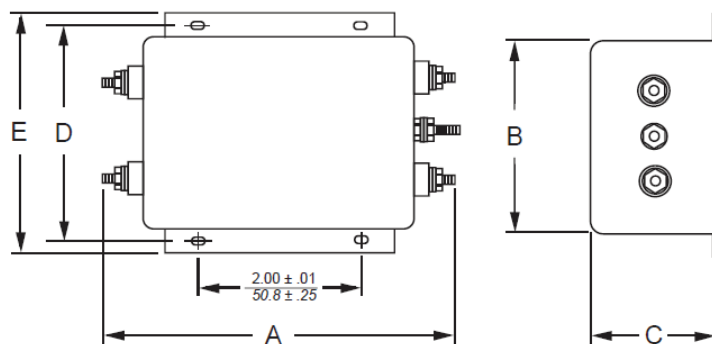
### STYLE C



Typical Dimensions:

- Wire Leads (5): 4.0 [101.6] Min., AWG18
- Mounting Holes (2): .188 [4.78] Dia.

### STYLE D



Typical Dimensions:

- Terminals (5): 8-32, Torque 18 lbf-in. [2.03 N-m] max. ± 2 [.22]
- Mounting Slots (4): .250 x .156 [6.35 x 3.96] Dia.

## Mechanical Dimensions:

Model Number	A max	B max	C max	D $\pm .15$ $\pm .38$	E max
AMI-M12W-1-10-X	4.69"/119.1mm	2.27"/57.7mm	1.80"/45.7mm	4.063"/103.2mm	4.47"/113.5mm
AMI-M12W-3-10-X	3.69"/93.7mm	2.27"/57.7mm	1.80"/45.7mm	4.063"/103.2mm	4.47"/113.5mm
AMI-M12X-1-15-X AMI-M12X-1-20-X	5.45"/138.4mm	3.12"/79.2mm	2.18"/55.4mm	3.5"/88.9mm	3.96"/100.6mm
AMI-M12Y-1-15-X AMI-M12Y-1-20-X	5.45"/138.4mm	3.12"/79.2mm	2.18"/55.4mm	3.5"/88.9mm	3.96"/100.6mm
AMI-M12X-6-15-X AMI-M12X-6-20-X	5.95"/151.1mm	3.12"/79.2mm	2.18"/55.4mm	3.5"/88.9mm	3.96"/100.6mm
AMI-M12Y-6-15-X AMI-M12Y-6-20-X	5.95"/151.1mm	3.12"/79.2mm	2.18"/55.4mm	3.5"/88.9mm	3.96"/100.6mm

## Typical Insertion Loss

According to CISPR17 in 50 Ω system

— Common Mode / Asymmetrical (L-G)  
 — Differential Mode / Symmetrical (L-L)

