

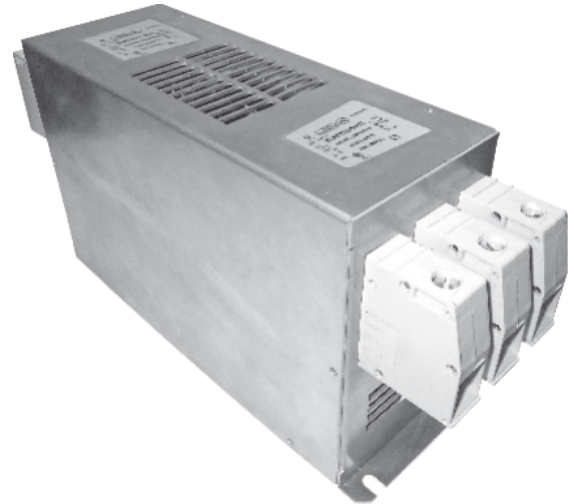
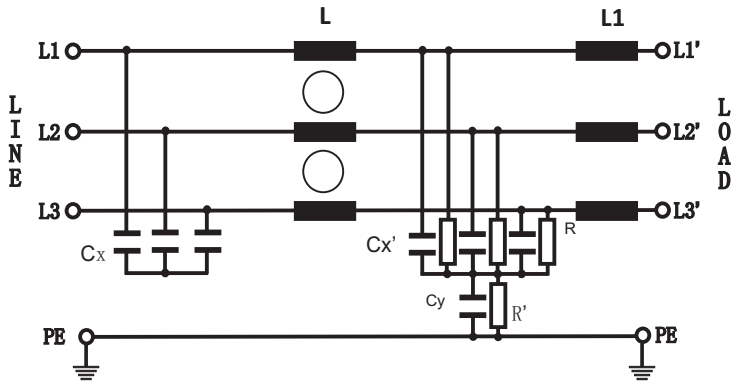
# Three-Phase Filters

## AMI-SC258HV-XXX-T



**EMC/EMI Filter For Three phase & Motor Drives With exceptional attenuation performance**

CIRCUIT DIAGRAM:



### Technical Specification

Max Rated Voltage 3x 520/300VAC

Operating Frequency DC to 50/60Hz

Rated Current 7A to 180A @50°C

High Voltage Test -

L-L 2100VDC 2sec

L-G 2650VDC 2sec

Temperature Range -25 to +100°C(25/100/21)

- 7A to 180A current ratings
- Most compact size
- Insulated safety input terminals
- Exceptional attenuation performance from 150KHz to 30MHz
- Excellent saturation resistance up 50 meter cable length

### Applications:

- Power Control Equipment for Power Distribution Lines
- Industrial Equipment Vulnerable to Transients on the AC Power Line (Computers, Traffic Controls, Motor Controllers, Etc.)
- Communications systems and other heavy-duty industrial systems,
- Ideal for application where computers are used to process secret or confidential information
- For the purpose of protecting against electrical surges and spikes, including those caused by lightning.
- Designed for frequency inverter and variable speed motor drives
- For small to medium sized industrial equipment, power converter and variable speed motor

### Features:

- Trouble free installation due ultra compact design of filter
- Solid connector terminals available for whole range
- Designed for universal applications

### Benefits:

- Eliminates Dangerous Voltage Transients.
- Lowers Overall System Costs by Reducing Downtime and Maintenance Costs.
- Improves Component and System Reliability.
- Reduces EMP/RFI Interference.

# Three-Phase Filters

## AMI-SC258HV-XXX-T

EMC/EMI Filter For Three phase & Motor Drives With exceptional attenuation performance

Filters Selection Table

SN	PART NO	RATED CURRENT @50°C A	LEAKAGE CURRENT 400V/50Hz mA	MECHANICAL DIMENSION L X W X H (mm)	CONNECTION TYPE
1	AMI-SC258HV-07-T	7	33.0	190 X 40 X 70	TERMINAL
2	AMI-SC258HV-16-T	16	33.0	250 X 45 X 70	TERMINAL
3	AMI-SC258HV-30-T	30	33.0	270 X 50 X 85	TERMINAL
4	AMI-SC258HV-42-T	42	33.0	310 X 50 X 85	TERMINAL
5	AMI-SC258HV-55-T	55	33.0	250 X 85 X 90	TERMINAL
6	AMI-SC258HV-75-T	75	33.0	270 X 80 X 135	TERMINAL
7	AMI-SC258HV-100-T	100	33.0	270 X 90 X 150	TERMINAL
8	AMI-SC258HV-130-T	130	33.0	270 X 90 X 150	TERMINAL
9	AMI-SC258HV-180-T	180	33.0	380 X 120 X 170	TERMINAL

Large range of power ratings allow to select convenient filter selection

AMI-SC258HV-XXX-T Filters provide a very high common and differential mode attenuation

Insulated, high quality safety terminals for input and output contribute over all equipment safety

Suitable to meet the latest EMC standards

Excellent performance for application with high interference level

### Remark

**\*\* Input and output connection available in Terminal and wire type**

**\*\*\* Wire size also available as per customer requirement**

# Three-Phase Filters

## AMI-SC258HV-XXX-T

EMC/EMI Filter For Three phase & Motor Drives With exceptional attenuation performance

### Insertion Loss(dB)

#### 7A

MHZ	0.1	1	10
CM	63	76	42
DM	59	69	38

#### 16A

MHZ	0.1	1	10
CM	68	75	36
DM	54	71	42

#### 30A

MHZ	0.1	1	10
CM	60	78	41
DM	54	71	46

#### 42A

MHZ	0.1	1	10
CM	62	79	39
DM	51	73	42

#### 55A

MHZ	0.1	1	10
CM	57	69	47
DM	51	61	44

#### 75A

MHZ	0.1	1	10
CM	61	71	39
DM	50	65	41

#### 100A

MHZ	0.1	1	10
CM	49	68	45
DM	42	59	40

#### 130A

MHZ	0.1	1	10
CM	47	68	38
DM	41	64	39

#### 180A

MHZ	0.1	1	10
CM	44	72	35
DM	32	63	37