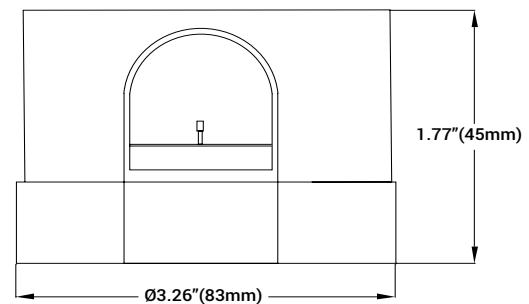


## E7 SERIES PHOTOCELL - LED LIGHTING COMPATIBLE

E7 series photocells are ideal for roadway and street lighting applications requiring multi-volt operation, durability, endurance, and low cost. Average expected life of E7 controls is twenty plus years with a 20,000 On/Off operation relay life.

### Product Features:

- High Temperature Resistant Housing
- Interlock Design
- Multi-Volt Operation
- IR Filtered Photo Transistor
- Meets or exceeds ANSI C136.10
- Design Life at Rated Load: 20,000 Cycles (20+ years)
- High Performance
- Low Cost
- 10 Year Product Warranty
- UL/CSA Listed (CUL)
- RoHS Compliant



### Specifications:

#### Physical

Enclosure: Designed to meet ANSI C136.10  
Power Consumption: Less than 0.5 Watts (avg.) at 120VAC

#### Temperature Range

-40°F to 158°F (-40°C to +70°C) at 96% RH

#### Light Sensor

Non-drifting photo sensor

#### Relay Rating

30 Amp general purpose relay

#### Load Rating

1000 Watt Tungsten, 1800 VA Ballast

#### Cover

High impact polypropylene with UV stabilized polycarbonate window

#### Base

High temperature polyester (PBT)

#### Connection

3-pole locking type with solid brass blades

#### Gasket

Cross-linked polyethylene

### E7 Series Product Selection Information

XXX - Denotes Optional Customer Number

Model	AMI-E7-101-GR-XXX	AMI-E7-102-BL-XXX	AMI-E7-103-MR-XXX
Rated Volts (VAC)	120	120/208/240/277	208/240/277
Voltage Range (Volts)	105-130	105-305	185-305
Color	Gray	Blue	Maroon

### E7 Series Technical Data

Voltage Range	Frequency	ON/OFF Ratio	Time Delay ON/OFF	Operating Light Levels	Fail Mode	Surge Protection
105-305 VAC	50/60Hz	1.5:1	Instant ON, 2-5 second delay OFF	Standard 1.5 Fc ON (optional 1-3 Fc)	ON	480J / 15kA