

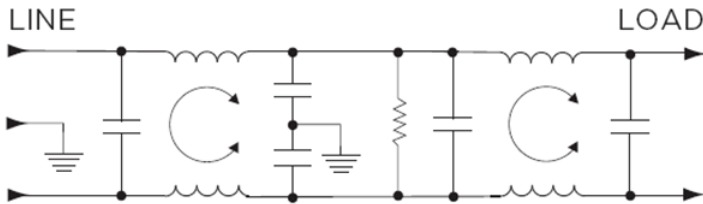
Features

- Earth Line Choke Option
- High CM & DM attenuation
- Rated up to 20A
- Choice of termination

Applications

- Electrical and Electronic equipment
- Consumer goods
- Home appliances
- Office equipment

Typical Circuit Diagram



Approvals & Compliances



Technical Specifications

| | |
|--------------------------------------|--|
| Maximum Continuous Operating Voltage | 250 VAC Max |
| Operating Frequency | 50/60Hz |
| Rated Current | 1 to 20A @40°C |
| Temperature range | -10°C to +40°C |
| High Potential Test Voltage | Line to Ground: 2250 VDC Line to Line: 1450 VDC |

Selection Table

| AMI Designation | Input/output Style | | | | Current Rating | Inductance | Capacitance | | Resistor | Leakage Current @ 120 VAC 60Hz/250 VAC 50 Hz | TIL Insertion Loss | Case Style |
|------------------------|-----------------------|------------|----------------|-----|----------------|------------|------------------|------|----------|--|--------------------|------------|
| | | | | | | | Cx | Cy | | | | |
| Available Part Numbers | 6.3mm Spade Terminals | Wire Leads | Threaded Bolts | IEC | A | mH | nF | pF | KΩ | | | |
| | | | | | | | AMI-M12R-1-1-B-1 | 1 | | | | |
| AMI-M12R-3-1-B-1 | - | 3 | - | - | 1 | 3.72 | 300 | 5500 | 680 | 0.4/0.7 | 005 | C |
| AMI-M12R-1-1-B-2 | 1 | - | - | - | 1 | 3.72 | 300 | 2800 | 680 | 0.21/0.36 | 001 | A |
| AMI-M12R-3-1-B-2 | - | 3 | - | - | 1 | 3.72 | 300 | 2800 | 680 | 0.21/0.36 | 001 | C |
| AMI-M12R-1-2-B-1 | 1 | - | - | - | 2 | 1.078 | 300 | 5500 | 680 | 0.4/0.7 | 006 | A |
| AMI-M12R-3-2-B-1 | - | 3 | - | - | 2 | 1.078 | 300 | 5500 | 680 | 0.4/0.7 | 006 | C |
| AMI-M12R-1-2-B-2 | 1 | - | - | - | 2 | 1.078 | 300 | 2800 | 680 | 0.21/0.36 | 004 | A |
| AMI-M12R-3-2-B-2 | - | 3 | - | - | 2 | 1.078 | 300 | 2800 | 680 | 0.21/0.36 | 004 | C |
| AMI-M12R-1-3-B-1 | 1 | - | - | - | 3 | 3.52 | 300 | 5500 | 680 | 0.4/0.7 | 007 | A |
| AMI-M12R-3-3-B-1 | - | 3 | - | - | 3 | 3.52 | 300 | 5500 | 680 | 0.4/0.7 | 007 | C |
| AMI-M12R-1-3-B-2 | 1 | - | - | - | 3 | 3.52 | 300 | 2800 | 680 | 0.21/0.36 | 002 | A |
| AMI-M12R-3-3-B-2 | - | 3 | - | - | 3 | 3.52 | 300 | 2800 | 680 | 0.21/0.36 | 002 | C |
| AMI-M12R-1-5-B-1 | 1 | - | - | - | 5 | 1.032 | 300 | 5500 | 680 | 0.4/0.7 | 008 | A |
| AMI-M12R-3-5-B-1 | - | 3 | - | - | 5 | 1.032 | 300 | 5500 | 680 | 0.4/0.7 | 008 | C |
| AMI-M12R-1-5-B-2 | 1 | - | - | - | 5 | 1.032 | 300 | 2800 | 680 | 0.21/0.36 | 003 | A |
| AMI-M12R-3-5-B-2 | - | 3 | - | - | 5 | 1.032 | 300 | 2800 | 680 | 0.21/0.36 | 003 | C |
| AMI-M12R-1-10-B-1 | 1 | - | - | - | 10 | 0.99 | 300 | 5500 | 680 | 0.4/0.7 | 009 | A |
| AMI-M12R-3-10-B-1 | - | 3 | - | - | 10 | 0.99 | 300 | 5500 | 680 | 0.4/0.7 | 009 | C |
| AMI-M12R-6-10-B | - | - | 6 | - | 10 | 0.99 | 300 | 5500 | 680 | 0.4/0.7 | 009 | D |
| AMI-M12R-1-10-B-2 | 1 | - | - | - | 10 | 0.99 | 300 | 2800 | 680 | 0.21/0.36 | 004 | A |
| AMI-M12R-3-10-B-2 | - | 3 | - | - | 10 | 0.99 | 300 | 2800 | 680 | 0.21/0.36 | 004 | C |
| AMI-M12R-1-20-B-1 | 1 | - | - | - | 20 | 0.88 | 300 | 5500 | 680 | 0.4/0.7 | 010 | B |
| AMI-M12R-6-20-B | - | - | 6 | - | 20 | 0.88 | 300 | 5500 | 680 | 0.4/0.7 | 010 | E |
| AMI-M12R-1-20-B-2 | 1 | - | - | - | 20 | 0.88 | 300 | 2800 | 680 | 0.21/0.36 | 004 | B |

Case Styles

STYLE A

Typical Dimensions:

| | |
|--------------------------|--|
| Line/Load Terminals (4): | .250 [6.3] with .07 [1.8] Dia. hole |
| Ground Terminal (1): | .250 [6.3] with .07 x .16 [1.8 x 3.8] slot |
| Mounting Holes (2): | .188 [4.78] Dia. |

STYLE B

Typical Dimensions:

| | |
|--------------------------|--|
| Line/Load Terminals (4): | .250 [6.3] with .07 [1.8] Dia. hole |
| Ground Terminal (1): | .250 [6.3] with .07 x .16 [1.8 x 3.8] slot |
| Mounting Slots (4): | .250 x .156 [6.35 x 3.96] Dia. |

STYLE C

Typical Dimensions:

| | |
|---------------------|-------------------------|
| Wire Leads (5): | 4.0 [101.6] Min., AWG18 |
| Mounting Holes (2): | .188 [4.78] Dia. |

STYLE D

Typical Dimensions:

| | |
|---------------------|--|
| Terminals (5): | 8-32, Torque 18 lbf-in. [2.03 N-m] max. ± 2 [22] |
| Mounting Holes (2): | .188 [4.78] Dia. |

STYLE E

Typical Dimensions:

| | |
|---------------------|--|
| Terminals (5): | 8-32, Torque 18 lbf-in. [2.03 N-m] max. ± 2 [22] |
| Mounting Slots (4): | .250 x .156 [6.35 x 3.96] Dia. |

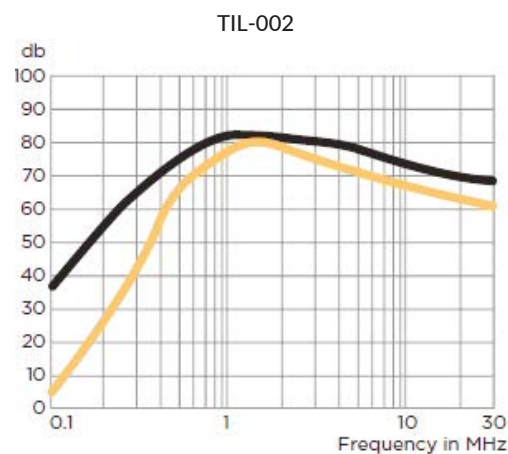
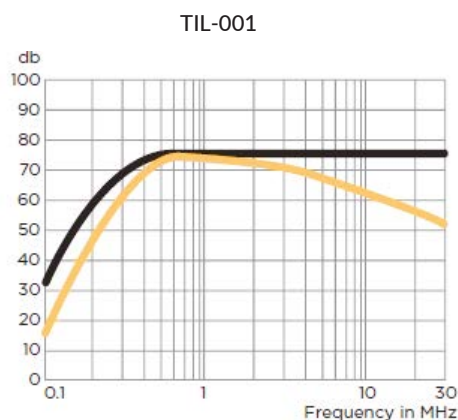
Case Dimensions:

| Model Number | A max | B max | C max | D max | E max |
|------------------------------|---------------|--------------|--------------|----------------|---------------|
| AMI-M12R-1-1 AMI-M12R-1-2 | 3.35"/85.1mm | 1.81"/46.0mm | 1.16"/29.5mm | 2.375"/60.33mm | 2.78"/70.6mm |
| AMI-M12R-3-1 AMI-M12R-3-2 | 2.07"/85.1mm | 1.81"/46.0mm | 1.16"/29.5mm | 2.375"/60.33mm | 2.78"/70.6mm |
| AMI-M12R-1-3 AMI-M12R-1-5 | 3.85"/97.8mm | 2.07"/52.6mm | 1.16"/29.5mm | 2.938"/74.63mm | 3.35"/85.1mm |
| AMI-M12R-3-3 AMI-M12R-3-5 | 2.56"/65.0mm | 2.07"/52.6mm | 1.16"/29.5mm | 2.938"/74.63mm | 3.35"/85.1mm |
| AMI-M12R-1-10 | 3.85"/97.8mm | 2.07"/52.6mm | 1.53"/38.9mm | 2.938"/74.63mm | 3.35"/85.1mm |
| AMI-M12R-3-10 | 2.56"/65.0mm | 2.07"/52.6mm | 1.53"/38.9mm | 2.938"/74.63mm | 3.35"/85.1mm |
| AMI-M12R-6-10 | 3.96"/100.6mm | 2.07"/52.6mm | 1.53"/38.9mm | 2.938"/74.63mm | 3.35"/85.1mm |
| AMI-M12R-1-20 | 5.23"/132.8mm | 3.37"/85.6mm | 1.53"/38.9mm | 3.75"/95.25mm | 4.20"/106.7mm |
| AMI-M12R-6-20 | 5.34"/135.6mm | 3.37"/85.6mm | 1.53"/38.9mm | 3.75"/95.25mm | 4.20"/106.7mm |

Typical Insertion Loss

According to CISPR17 in 50 Ω system

— Common Mode / Asymmetrical (L-G)
— Differential Mode / Symmetrical (L-L)



Typical Insertion Loss

According to CISPR17 in 50 Ω system

— Common Mode / Asymmetrical (L-G)
 — Differential Mode / Symmetrical (L-L)

