

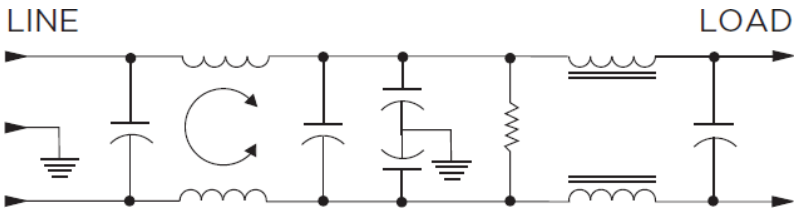
### Features

- General purpose filtering
- High Differential Mode attenuation
- Rated up to 20A
- Low Earth Leakage

### Applications

- Electrical and Electronic equipment
- Consumer goods
- Home appliances
- Office equipment

### Typical Circuit Diagram



### Approvals & Compliances



### Technical Specifications

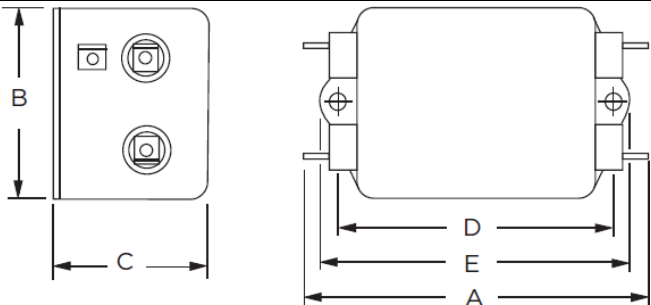
Maximum Continuous Operating Voltage	250 VAC Max
Operating Frequency	50/60Hz
Rated Current	3to 20A @40°C
Temperature range	-10°C to +40°C
High Potential Test Voltage	Line to Ground: 2250 VDC Line to Line: 1450 VDC

## Selection Table

AMI Designation	Input/output Style	Current Rating	Inductance	Capacitance		Resistor	Leakage Current @ 120 VAC 60Hz/250 VAC 50 Hz	TIL Insertion Loss	Case Style
			L	Cx	Cy	KΩ			
Available Part Numbers	6.3mm Spade Terminals		mH	nF	pF		mA		
AMI-M12Q-1-3-B	1	3	1.036	810	1000	330	0.07mA/.13mA	001	A
AMI-M12Q-1-6-B	1	6	1.83	810	1000	330	0.07mA/.13mA	002	A
AMI-M12Q-1-10-B	1	10	1.245	810	1000	330	0.07mA/.13mA	003	A
AMI-M12Q-1-20-B	1	20	1.76	1010	1000	330	0.07mA/.13mA	004	B

## Case Styles

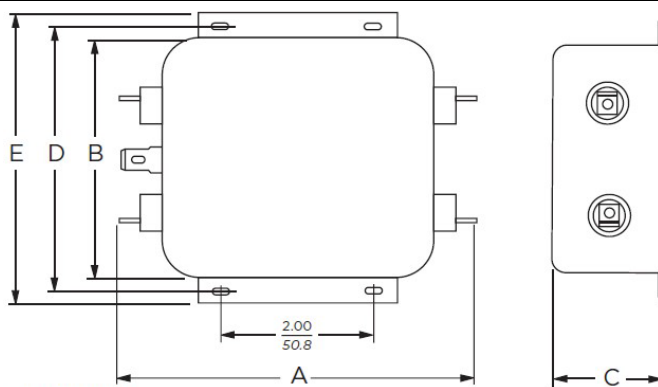
### STYLE A



Typical Dimensions:

Line/Load Terminals (4): .250 [6.3] with .07 [1.8] Dia. hole  
 Ground Terminal (1): .250 [6.3] with .07 x .16 [1.8 x 3.8] slot  
 Mounting Holes (2): .188 [4.78] Dia.

### STYLE B



Typical Dimensions:

Line/Load Terminals (4): .250 [6.3] with .07 [1.8] Dia. hole  
 Ground Terminal (1): .250 [6.3] with .07 x .16 [1.8 x 3.8] slot  
 Mounting Holes (2): .188 [4.78] Dia.

## Case Dimensions

Model Number	A max	B max	C max	D $\begin{smallmatrix} -.015 \\ .38 \end{smallmatrix}$	E max
AMI-M12Q-1-3-B	3.36"/85.3mm	1.82"/46.2mm	1.28"/32.5mm	2.375"/60.33mm	2.78"/70.6mm
AMI-M12Q-1-6-B	3.86"/98.0mm	2.08"/52.8mm	1.53"/38.9mm	2.938"/74.63mm	3.34"/84.8mm
AMI-M12Q-1-10-B	3.86"/98.0mm	2.08"/52.8mm	1.53"/38.9mm	2.938"/74.63mm	3.34"/84.8mm
AMI-M12Q-1-20-B	5.23"/132.8mm	3.38"/85.9mm	1.53"/38.9mm	3.75"/95.25mm	4.20"/106.7mm

## Typical Insertion Loss

According to CISPR17 in 50 Ω system

— Common Mode / Asymmetrical (L-G)  
— Differential Mode / Symmetrical (L-L)

