

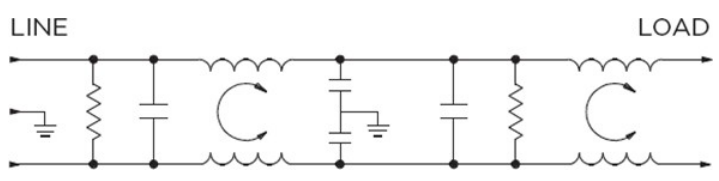
Features

- General purpose filtering
- High CM & DM attenuation
- Rated up to 30A
- Choice of termination

Applications

- Electrical and Electronic equipment
- Consumer goods
- Home appliances
- Office equipment

Typical Circuit Diagram



Approvals & Compliances



Technical Specifications

Maximum Continuous Operating Voltage	250 VAC Max
Operating Frequency	50/60Hz
Rated Current	3 to 30A @40°C
Temperature range	-10°C to +40°C
High Potential Test Voltage	Line to Ground: 2250 VDC Line to Line: 1450 VDC

Selection Table

AMI Designation	Input/output Style			Current Rating	Inductance	Capacitance		Resistor	Leakage Current @ 120 VAC 60Hz/250 VAC 50 Hz	TIL Insertion Loss	Case Style
						Cx	Cy				
Available Part Numbers	6.3mm Spade Terminals	Wire Leads	Threaded Bolts	A	mH	nF	pF	KΩ			
						AMI-M12A-1-3-B	1				
AMI-M12A-3-3-B	-	3	-	3	1.58	1360	2800	340	0.21/0.43	001	B
AMI-M12A-1-6-B	1	-	-	6	1.56	1360	2800	340	0.21/0.43	002	A
AMI-M12A-3-6-B	-	3	-	6	1.56	1360	2800	340	0.21/0.43	002	B
AMI-M12A-1-10-B	1	-	-	10	1.48	2000	2800	235	0.21/0.43	003	A
AMI-M12A-3-10-B	-	3	-	10	1.48	2000	2800	235	0.21/0.43	003	B
AMI-M12A-6-10-B	-	-	6	10	1.48	2000	2800	235	0.21/0.43	003	C
AMI-M12A-1-15-C	1	-	-	15	1.04	3000	10000	117	0.73/1.52	004	A
AMI-M12A-3-15-C	-	3	-	15	1.04	3000	10000	117	0.73/1.52	004	B
AMI-M12A-6-15-C	-	-	6	15	1.04	3000	10000	117	0.73/1.52	004	C
AMI-M12A-1-20-C	1	-	-	20	0.84	4400	10000	94	0.73/1.52	005	A
AMI-M12A-6-20-C	-	-	6	20	0.84	4400	10000	94	0.73/1.52	005	C
AMI-M12A-6-30-C	-	-	6	30	0.88	4400	10000	94	0.73/1.52	006	D

Case Styles

STYLE A

Typical Dimensions:

Line/Load Terminals (4):	.250 [6.3] with .07 [1.8] Dia. hole
Ground Terminal (1):	.250 [6.3] with .07 x .16 [1.8 x 3.8] slot
Mounting Holes (2):	.187 ±.008 [4.75 ±.20] Dia.

STYLE B

Typical Dimensions:

Wire leads (5):	4.0 [101.6] Min., AWG18 (AWG16 for 15A)
Mounting Holes (2):	.187 ±.008 [4.75 ±.20] Dia.

STYLE C

Typical Dimensions:

Terminals (5):	8-32, Torque 18 lbf-in. [2.03 N-m] max. ± 2 [.22]
Mounting Holes (4):	.187 ±.008 [4.75 ±.20] Dia.

STYLE D

Typical Dimensions:

Terminals (5):	10-32, Torque 27 lbf-in. [3.05 N-m] max. ± 3 [.34]
Mounting Slots (4):	.203 x .156 [5.16 x 3.96]

Case Dimensions

Model Number	A max	B max	C max	D $\frac{\pm .015}{\pm .38}$	E max
AMI-M12A-1-3	3.35"/85.1mm	1.81"/46mm	1.16"/29.5mm	2.375"/60.3mm	2.78"/70.6mm
AMI-M12A-1-6	3.85"/97.8	2.07"/52.6mm	1.16"/29.5mm	2.938"/74.6mm	3.35"/85.1mm
AMI-M12A-1-10	3.85"/97.8	2.07"/52.6mm	1.53"/38.91mm	2.938"/74.6mm	3.35"/85.1mm
AMI-M12A-1-15	4.97"/126.2mm	2.25"/57.2mm	1.78"/45.2mm	4.063"/103.2mm	4.46"/113.3mm
AMI-M12A-1-20					
AMI-M12A-3-3	2.07"/52.6mm	1.81"/46mm	1.16"/29.5mm	2.375"/60.3mm	2.78"/70.6mm
AMI-M12A-3-6	2.56"/65mm	2.07"/52.6mm	1.16"/29.5mm	2.938"/74.6mm	3.35"/85.1mm
AMI-M12A-3-10	2.56"/65mm	2.07"/52.6mm	1.53"/38.91mm	2.938"/74.6mm	3.35"/85.1mm
AMI-M12A-3-15	3.69"/93.7mm	2.25"/57.2mm	1.78"/45.2mm	4.063"/103.2mm	4.47"/113.5mm
AMI-M12A-6-10	3.94"/99.9mm	2.07"/52.6mm	1.53"/38.91mm	2.938"/74.63mm	3.35"/85.1mm
AMI-M12A-6-15	5.09"/129.3mm	2.25"/57.2mm	1.78"/45.2mm	4.063"/103.2mm	4.47"/113.5mm
AMI-M12A-6-20					
AMI-M12A-6-30	6.05"/153.7mm	3.12"/79.2mm	2.18"/55.4mm	3.5"/88.9mm	3.96"/100.6mm

Typical Insertion Loss

According to CISPR17 in 50 Ω system

— Common Mode / Asymmetrical (L-G)
— Differential Mode / Symmetrical (L-L)

