

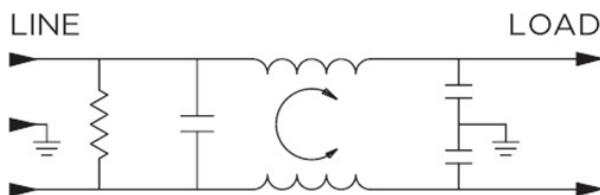
Features

- General purpose filtering
- Choice of Earth Leakage
- Rated up to 30A
- Choice of termination

Applications

- Electrical and Electronic equipment
- Consumer goods
- Home appliances
- Office equipment

Typical Circuit Diagram



Approvals & Compliances



UL Approved

Technical Specifications

Maximum Continuous Operating Voltage	250 VAC Max
Operating Frequency	50/60Hz
Rated Current	6 to 30 A @40°C
Temperature range	-10°C to +40°C
High Potential Test Voltage	Line to Ground: 2250 VDC Line to Line: 1450 VDC

Selection Table

AMI Designation	Input/output Style		Current Rating	Inductance	Capacitance		Resistor	Leakage Current @ 120 VAC 60Hz/250 VAC 50Hz	TIL Insertion Loss	Case Style
					Cx	Cy				
Available Part Numbers	6.3mm Spade Terminals	Threaded Bolts	A	mH	nF	pF	KΩ	mA		
					AMI-M110-1-6-B	1				
AMI-M110-1-6-C	1	-	6	1.0	1000	10000	330	0.75/1.25	007	A
AMI-M110-1-10-B	1	-	10	1.1	1000	2800	330	0.22/0.36	002	B
AMI-M110-6-10-B	-	6	10	1.1	1000	2800	330	0.22/0.36	003	C
AMI-M110-1-10-C	1	-	10	1.1	1000	10000	330	0.75/1.25	008	B
AMI-M110-6-10-C	-	6	10	1.1	1000	10000	330	0.75/1.25	009	C
AMI-M110-1-20-B	1	-	20	0.9	1000	2800	330	0.22/0.36	004	B
AMI-M110-6-20-B	-	6	20	0.9	1000	2800	330	0.22/0.36	005	C
AMI-M110-1-20-C	1	-	20	0.9	1000	10000	330	0.75/1.25	010	B
AMI-M110-6-20-C	-	6	20	0.9	1000	10000	330	0.75/1.25	011	C
AMI-M110-6-30-B	-	6	30	0.9	1000	2800	330	0.22/0.36	006	C
AMI-M110-6-30-C	-	6	30	0.9	1000	10000	330	0.75/1.25	012	C

Case Styles

STYLE A

Typical Dimensions:

- Line/Load Terminals (4): .250 [6.3] with .07 [1.8] Dia. hole
- Ground Terminal (1): .250 [6.3] with .07 x .16 [1.8 x 3.8] slot
- Mounting Holes (2): .188 [4.75] Dia.

STYLE B

Typical Dimensions:

- Line/Load Terminals (4): .250 [6.3] with .07 [1.8] Dia. hole
- Ground Terminal (1): .250 [6.3] with .07 x .16 [1.8 x 3.8] slot
- Mounting Holes (2): .188 [4.75] Dia.

STYLE C

Typical Dimensions:

- Terminals (5): 8-32, Torque 18 lbf-in. [2.03 N-m] max. ± 2 [22]
- Mounting Holes (2): .188 [4.75] Dia.

Case Dimensions:

Model Number	A max	B max	C max	D $\begin{smallmatrix} \pm .15 \\ \pm .38 \end{smallmatrix}$	E max
AMI-M110-1-6	3.36"/85.34mm	1.82"/46.23mm	0.91"/23.11mm	2.375"/60.325mm	2.78"/70.61mm
AMI-M110-1-10	3.36"/85.34mm	1.82"/46.23mm	1.28"/32.51mm	2.375"/60.325mm	2.78"/70.61mm
AMI-M110-6-10	3.47"/88.14mm	1.82"/46.23mm	1.53"/38.86mm	2.375"/60.325mm	2.78"/70.61mm
AMI-M110-1-20	3.85"/97.79mm	2.07"/52.58mm	1.31"/33.27mm	2.938"/74.625mm	3.35"/85.09mm
AMI-M110-6-20	4.00"/101.60mm	2.07"/52.58mm	1.53"/38.86mm	2.938"/74.625mm	3.35"/85.09mm
AMI-M110-6-30	4.92"/124.97mm	2.07"/52.58mm	1.53"/38.86mm	3.947"/100.254mm	4.33"/109.98mm

Typical Insertion Loss

According to CISPR17 in 50 Ω system

— Common Mode / Asymmetrical (L-G)
 — Differential Mode / Symmetrical (L-L)

