

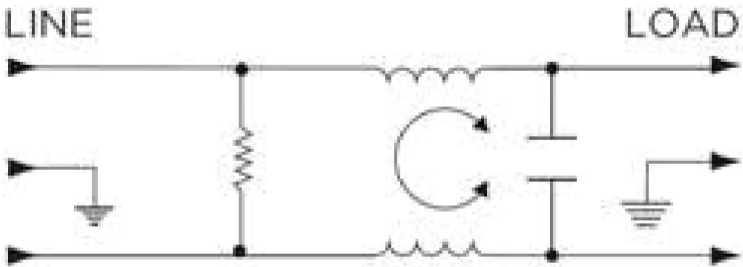
Features

- General purpose filtering
- Low cost
- Rated up to 15A
- Choice of termination; Faston, Wire leads, Studs

Applications

- Electrical and Electronic equipment
- Consumer goods
- Home appliances
- Office equipment

Typical Circuit Diagram



Approvals & Compliances



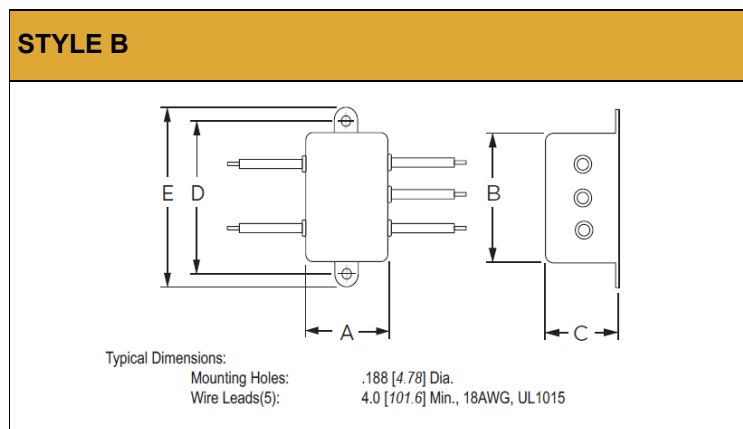
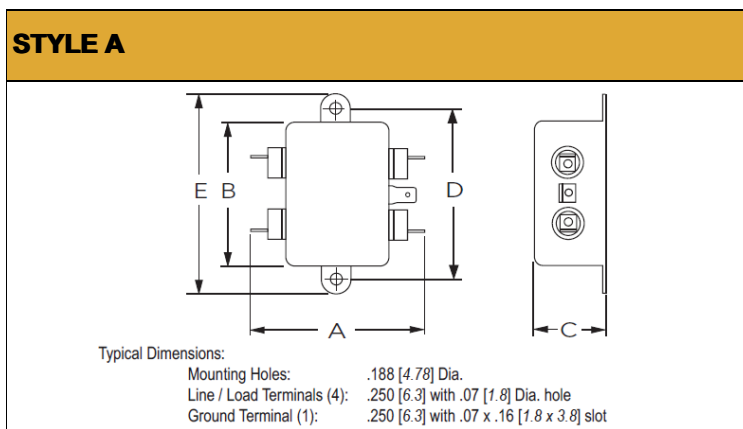
Technical Specifications

Maximum Continuous Operating Voltage	250 VAC Max
Operating Frequency	50/60Hz
Rated Current	3 to 15 A @40°C
Temperature range	-10°C to +40°C
High Potential Test Voltage	Line to Ground: 2250 VDC Line to Line: 1450 VDC

Selection Table

AMI Designation	Input/output Style		Current Rating	Inductance	Capacitance		Resistor	Leakage Current@ 120VAC 60Hz/250 VAC 50 Hz	TIL Insertion Loss	Case Style
					A	mH				
Available Part Numbers	6.3mm Spade Terminals	Wire Leads			nF	pF		μA		
AMI-M11AR-1-3-A	1		3	1	10	0	1500	2μA/5μA	001	A
AMI-M11AR-3-3-A		3	3	1	10	0	1500	2μA/5μA	001	B
AMI-M11AR-1-6-A	1		6	0.465	10	0	1500	2μA/5μA	002	A
AMI-M11AR-3-6-A		3	6	0.465	10	0	1500	2μA/5μA	002	B
AMI-M11AR-1-10-A	1		10	0.36	10	0	1500	2μA/5μA	003	A
AMI-M11AR-3-10-A		3	10	0.36	10	0	1500	2μA/5μA	003	B

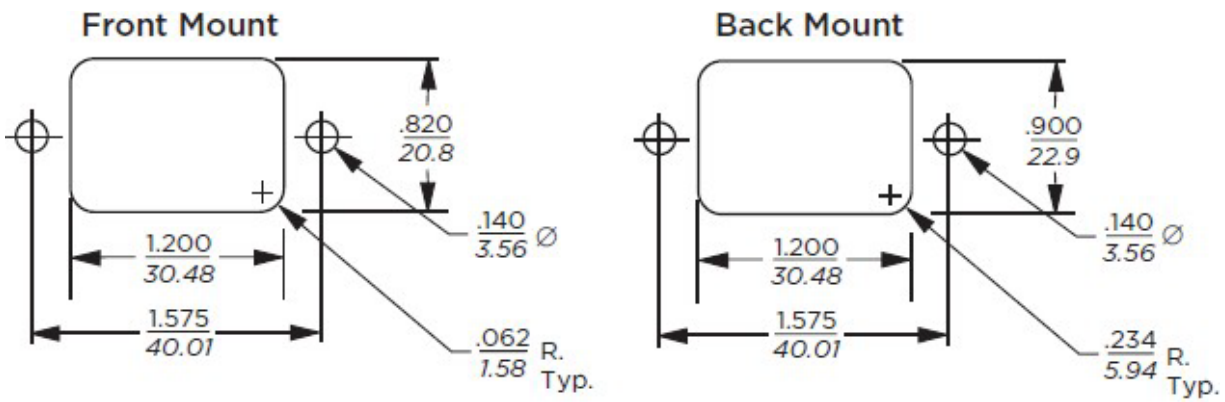
Case Styles



Mechanical Dimensions:

Model Number	A max	B max	C max	D $\pm \frac{.15}{.38}$	E max	F(ref.)
AMI-M11AR-1-X-A	2.25"/57.2mm	1.82"/46.1mm	0.66"/16.7mm	2.125"/53.98mm	2.53"/53.98mm	
AMI-M11AR-3-X-A	0.96"/24.40mm	1.82"/46.1mm	0.66"/16.7mm	2.125"/53.98mm	2.53"/64.2mm	
AMI-M11AR-4-6-A	2.20"/55.9mm	1.19"/30.2mm	0.81"/20.6mm	1.575"/40.01mm	1.98"/50.3mm	
AMI-M11AR-4-10-A AMI-M11AR-4C-10-A	2.62"/66.5mm	1.19"/30.2mm	0.81"/20.6mm	1.575"/40.01mm	1.98"/50.3mm	
AMI-M11AR-4-15-A	2.62"/66.5mm	1.19"/30.2mm	0.81"/20.6mm	1.575"/40.01mm	1.98"/50.3mm	
AMI-M11AR-5-X-A	1.55"/39.4mm	1.19"/30.2mm	0.85"/21.6mm	1.575"/40.01mm	1.98"/50.3mm	0.295"/7.5mm
AMI-M11AR-8-X-A	1.56"/39.7mm	1.19"/30.2mm	0.81"/20.6mm	1.575"/40.01mm	1.98"/50.3mm	0.295"/7.5mm
AMI-M11AR-9-X-A	1.55"/39.4mm	1.19"/30.2mm	0.85"/21.6mm	1.575"/40.01mm	1.98"/50.3mm	

Recommended Panel Cutouts



Tolerances $\pm .005$ [0.13] unless otherwise noted

- Note 1: H4, H4C and H8 allow for front or back mounting
- Note 2: HS and H9 allow for back mounting only

Typical Insertion Loss

According to CISPR17 in 50 Ω system

— Common Mode / Asymmetrical (L-G)
 — Differential Mode / Symmetrical (L-L)

